

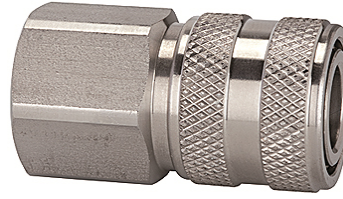
K-SVKM NW 7,2 IG VA

Quick disconnect couplings DN 7.2, stainless steel, female

HANSA FLEX

Savybės

Darbinis slėgis	1 - 35 bar and rough vacuum
Oro srautas	1.000 l/min (at 6 bar and $\Delta p = 0.5$ bar)
Medžiagos temperatūra	-25 °C to +200 °C
Korpusas, mova, vožtuvo korpusas	Stainless steel 1.4305
Spyruoklė, spyruoklinis atraminis žiedas	Stainless steel 1.4310
Blokavimo kaiščiai	Stainless steel 1.4401
Sandarinimo medžiaga	FKM



Nuoroda

Daugiau duomenų pagal užklausimą.

Aprašas

Classic standard coupling type, one side sealing, made of stainless steel. The closed sleeve protects the coupling from dirt. We recommend the use of stainless steel plugs and stems!

Prekė

Pavadinimas	Jungtis	Ilgis (mm)	SW (mm)
K- 07 35 07 62	G 1/4 female	43,0	22
K- 07 35 07 63	G 3/8 female	43,0	22
K- 07 35 07 64	G 1/2 female	46,0	24

Papildomos dalys

K-NIPPEL KUPPL NW7 AG VA 2	Plugs for couplings DN 7.2 - DN 7.8, stainless steel 1.4305, male
K-NIPPEL KUPPL NW7 IG VA 1	Plugs for couplings DN 7.2 - DN 7.8, stainless steel 1.4305, female
K-TUE 7,2 7,8 VA 2	Stems for couplings DN 7.2 - DN 7.8, stainless steel 1.4305