

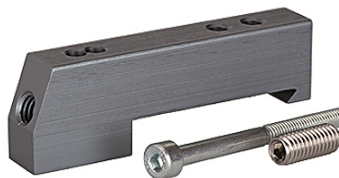
K-ADA HUTPROFIL

Adapter for DIN rail

HANSA FLEX

Savybės

Medžiagos	Filtered, unlubricated or lubricated compressed air. If lubrication is used, it must be continuous.
Darbinis slėgis	Max. vacuum 10 bar (external pilots), 3 to 7 bar (internal pilots as standard)
Valdymo slėgis	3 - 7 bar
Temperatūros diapazonas	-10 °C to +60 °C
Srautas	200 NI/min (Ø 4), 500 NI/min (Ø 6), 800 NI/min (Ø 8)
Valdiklių skaičius	Max. 16 (e.g. 16 spring return valves)
Rankinis pagalbinis aktyvinimas	Latching (bistable), Monostable (non-latching) version also available on request
Galios sąnaudos	0.6 W per pilot
Apsaugos rūšis	IP 65



Nuoroda

Daugiau duomenų pagal užklausimą.

Aprašas

These compact valve terminals, with a maximum flow rate of 800 NI/min, can be individually adapted to the specific conditions of each application thanks to the wide range of functions and various input and intermediate plates. Since each valve terminal is a customer-specific combination of a series of individual elements, the catalogue only lists the available input, intermediate and end plates as well as the different valve discs and the 25-pin multi-pole connectors.

Papildoma informacija

Important: The scope of supply does not include a connector. Please order separately.

Prekė

Pavadinimas	Apibrėžtis
K- 07 15 22 43	Adapter for DIN rail