

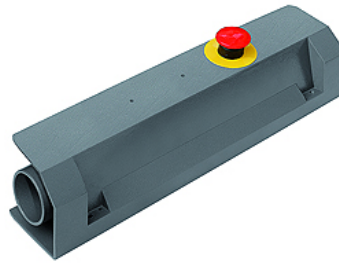
K-ZWEIHAND S KONSOLE KOMPL

Complete pushbutton panel

HANSA FLEX

Savybės

Medžiagos	Filtered, unlubricated compressed air
Darbinis slėgis	2.5 - 8 bar
Temperatūros diapazonas	-10 °C to +60 °C
Jungtis	Push-in fitting for pipe 4 mm
Aktyvinimo įtaisas	Pneumatic
6 bar oro srauto kiekis	85 Nl/min
maks. įėjimo signalo laiko poslinkis	0,4 s



Nuoroda

Daugiau duomenų pagal užklausimą.

Aprašas

This pushbutton panel according to EN574 Type III A is comprised of a dual manual control valve with a housing and manifold. The valve only generates an output signal if two synchronised input signals are received within < 0.4 sec. If one input signal is interrupted, the output signal is interrupted as well. An emergency stop valve with a mushroom pushbutton is included. The housing can be screwed to the wall in any position. The valve manifold can optionally be supplied without the housing and with a DIN bar adapter. Applications: Two-hand safety valve for start-of-cycle control on a pneumatically operated machine.

Prekė

Pavadinimas	Apibrėžtis
K- 07 15 26 08	Complete pushbutton panel with safety valve