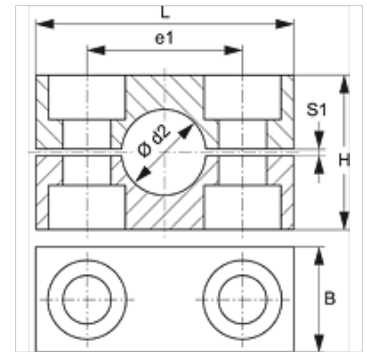


SRS 30-100 PP G

Smagās sērijas cauruļu skavas

Īpašības

| | |
|-----------------------|-----------------------|
| Modelis | Viencaurules skava |
| Papildinājums modelim | Skavas iekšpuse gluda |
| Sērija | Smags |
| Standarts | DIN 3015-2 |
| Temperatūra min. | -30 °C |
| Temperatūra max. | 90 °C |
| Materiāls | Polipropilēns |



Norāde

Šūteņu un kabeļu turēšanai ieteicams izmantot skavas ar gludu iekšējo virsmu. Montāža tiek veikta bez nopriegošanas līdz bloka augstums H samazinās par spraugas izmēru S1.

Pasūtījuma norādes

1 detaļa = 2 skavas daļas

Izstrādājums

| Apzīmējums | Skavas izmērs | Caurules ārējais Ø d2 (mm) | Caurules ārējais Ø d2 | B (mm) | e1 (mm) | H (mm) | L (mm) | S1 (mm) |
|-----------------|---------------|-------------------------------|-----------------------|-----------|------------|-----------|-----------|------------|
| SRS 3006 PP G | 1 | 6,0 | - | 30 | 33 | 32 | 56 | 2 |
| SRS 3008 PP G | 1 | 8,0 | 5/16" | 30 | 33 | 32 | 56 | 2 |
| SRS 3010 PP G | 1 | 10,0 | - | 30 | 33 | 32 | 56 | 2 |
| SRS 3012 PP G | 1 | 12,0 | - | 30 | 33 | 32 | 56 | 2 |
| SRS 3012.7 PP G | 1 | 12,7 | 1/2" | 30 | 33 | 32 | 56 | 2 |
| SRS 3013.5 PP G | 1 | 13,5 | - | 30 | 33 | 32 | 56 | 2 |
| SRS 3014 PP G | 1 | 14,0 | - | 30 | 33 | 32 | 56 | 2 |
| SRS 3015 PP G | 1 | 15,0 | - | 30 | 33 | 32 | 56 | 2 |
| SRS 3016 PP G | 1 | 16,0 | 5/8" | 30 | 33 | 32 | 56 | 2 |
| SRS 3017.2 PP G | 1 | 17,2 | - | 30 | 33 | 32 | 56 | 2 |
| SRS 3018 PP G | 1 | 18,0 | - | 30 | 33 | 32 | 56 | 2 |
| SRS 4019 PP G | 2 | 19,0 | 3/4" | 30 | 45 | 48 | 71 | 2 |
| SRS 4020 PP G | 2 | 20,0 | - | 30 | 45 | 48 | 71 | 2 |
| SRS 4021.3 PP G | 2 | 21,3 | - | 30 | 45 | 48 | 71 | 2 |
| SRS 4022 PP G | 2 | 22,0 | - | 30 | 45 | 48 | 71 | 2 |
| SRS 4023 PP G | 2 | 23,0 | - | 30 | 45 | 48 | 71 | 2 |
| SRS 4025 PP G | 2 | 25,0 | 1" | 30 | 45 | 48 | 71 | 2 |
| SRS 4026.9 PP G | 2 | 26,9 | - | 30 | 45 | 48 | 71 | 2 |
| SRS 4028 PP G | 2 | 28,0 | - | 30 | 45 | 48 | 71 | 2 |
| SRS 4030 PP G | 2 | 30,0 | - | 30 | 45 | 48 | 71 | 2 |
| SRS 5030 PP G | 3 | 30,0 | - | 30 | 60 | 60 | 86 | 2 |
| SRS 5032 PP G | 3 | 32,0 | 1.1/4" | 30 | 60 | 60 | 86 | 2 |
| SRS 5033.7 PP G | 3 | 33,7 | - | 30 | 60 | 60 | 86 | 2 |
| SRS 5035 PP G | 3 | 35,0 | - | 30 | 60 | 60 | 86 | 2 |
| SRS 5038 PP G | 3 | 38,0 | 1.1/2" | 30 | 60 | 60 | 86 | 2 |
| SRS 5040 PP G | 3 | 40,0 | - | 30 | 60 | 60 | 86 | 2 |
| SRS 5042 PP G | 3 | 42,0 | - | 30 | 60 | 60 | 86 | 2 |
| SRS 6038 PP G | 4 | 38,0 | 1.1/2" | 45 | 90 | 90 | 117 | 3 |
| SRS 6040 PP G | 4 | 40,0 | - | 45 | 90 | 90 | 117 | 3 |
| SRS 6042 PP G | 4 | 42,0 | - | 45 | 90 | 90 | 117 | 3 |
| SRS 6045 PP G | 4 | 45,0 | - | 45 | 90 | 90 | 117 | 3 |
| SRS 6048.3 PP G | 4 | 48,3 | - | 45 | 90 | 90 | 117 | 3 |
| SRS 6050 PP G | 4 | 50,0 | - | 45 | 90 | 90 | 117 | 3 |
| SRS 6051 PP G | 4 | 51,0 | 2" | 45 | 90 | 90 | 117 | 3 |
| SRS 6052 PP G | 4 | 52,0 | - | 45 | 90 | 90 | 117 | 3 |
| SRS 6055 PP G | 4 | 55,0 | - | 45 | 90 | 90 | 117 | 3 |
| SRS 6057 PP G | 4 | 57,0 | 2.1/4" | 45 | 90 | 90 | 117 | 3 |
| SRS 6060.3 PP G | 4 | 60,3 | - | 45 | 90 | 90 | 117 | 3 |
| SRS 6063 PP G | 4 | 63,0 | 2.1/2" | 45 | 90 | 90 | 117 | 3 |
| SRS 6065 PP G | 4 | 65,0 | - | 45 | 90 | 90 | 117 | 3 |
| SRS 6070 PP G | 4 | 70,0 | - | 45 | 90 | 90 | 117 | 3 |



Izstrādājumu varianti

| | |
|----------------------|--|
| SRS 30-100 AL | Smagās sērijas cauruļu skavas, Skavas iekšpuse rievota |
| SRS 30-100 PA | Smagās sērijas cauruļu skavas, Skavas iekšpuse rievota |
| SRS 30-100 PP | Smagās sērijas cauruļu skavas, Skavas iekšpuse rievota |
| SRS 30-100 VG | Smagās sērijas cauruļu skavas, Skavas iekšpuse rievota |