

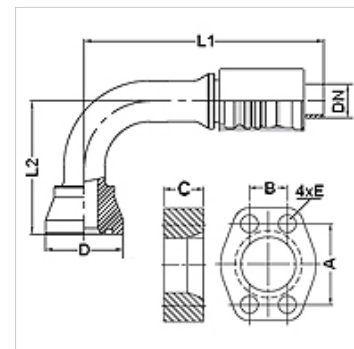
# PA 700 SK6 90 PLUS

Swage fitting, SK6 angle 90°

**HANSA FLEX**

## Īpašības

|                            |   |
|----------------------------|---|
| <b>Izmantošana</b>         | Kompresijas armatūra HD 700 PLUS šļūtenēm             |
| <b>Savienojums 1</b>       | SAE atloku savienojums 6000 PSI                       |
| <b>Bļīvējuma veids 1</b>   | plakanais bļīvējums ar SF apaļa šķērsriezuma gredzenu |
| <b>Saslēgšana</b>          | ar fiksatoru pret izraušanu (Interlock)               |
| <b>Piegādes apjoms</b>     | Kompresijas nipelis + saspiežama aptvere              |
| <b>Papildu pazīme</b>      | cone SAE fitting                                      |
| <b>Materiāls</b>           | Tērauds   |
| <b>Virsmas aizsardzība</b> | galvaniskais pārklājums                               |



## Izstrādājums

| Apzīmējums                | DN | Izmērs | Collas | Atloka izmērs | D<br>(mm) | M metr.   | L1<br>(mm) | L2<br>(mm) | A<br>(mm) | B<br>(mm) | C<br>(mm) | E<br>(mm) |
|---------------------------|----|--------|--------|---------------|-----------|-----------|------------|------------|-----------|-----------|-----------|-----------|
| PA 720 SK6 90 PLUS        | 19 | 12     | 3/4"   | 3/4"          | 43,5      | M 10 x 45 | 134,8      | 75,0       | 50,8      | 23,8      | 25,0      | 11        |
| PA 725 SK6 90 PLUS        | 25 | 16     | 1"     | 1"            | 49,4      | M 12 x 50 | 155,0      | 90,0       | 57,2      | 27,8      | 27,0      | 13        |
| PA 725 SK6 32 90 PLUS     | 25 | 16     | 1"     | 1.1/4"        | 57,4      |           | 167,6      | 105,0      | 66,6      | 31,8      | 32,0      | 15        |
| PA 732 SK6 90 PLUS        | 31 | 20     | 1.1/4" | 1.1/4"        | 57,4      |           | 185,0      | 120,0      | 66,6      | 31,8      | 32,0      | 15        |
| PA 732 SK6 90 L 160 PLUS  | 31 | 20     | 1.1/4" | 1.1/4"        | 57,4      |           | 185,0      | 160,0      | 66,6      | 31,8      | 32,0      | 15        |
| PA 732 SK6 40 90 PLUS     | 31 | 20     | 1.1/4" | 1.1/2"        | 68,4      |           | 213,1      | 125,9      | 79,3      | 36,5      | 40,0      | 17        |
| PA 740 SK6 90 PLUS        | 38 | 24     | 1.1/2" | 1.1/2"        | 68,4      |           | 234,0      | 140,0      | 79,3      | 36,5      | 40,0      | 17        |
| PA 740 SK6 90 L180 PLUS   | 38 | 24     | 1.1/2" | 1.1/2"        | 68,4      |           | 234,0      | 180,0      | 79,3      | 36,5      | 40,0      | 17        |
| PA 740 SK6 90 L215 PLUS   | 38 | 24     | 1.1/2" | 1.1/2"        | 68,4      |           | 234,0      | 215,0      | 79,3      | 36,5      | 40,0      | 17        |
| PA 740 SK6 50 90 PLUS     | 38 | 24     | 1.1/2" | 2"            | 83,5      |           | 287,0      | 160,0      | 96,8      | 44,5      | 50,0      | 21        |
| PA 740 SK6 50 90 L 180 PL | 38 | 24     | 1.1/2" | 2"            | 83,5      |           | 284,0      | 180,0      | 96,8      | 44,5      | 50,0      | 21        |
| PA 750 SK6 90 PLUS        | 51 | 32     | 2"     | 2"            | 83,5      |           | 272,9      | 180,0      | 96,8      | 44,5      | 50,0      | 21        |
| PA 750 SK6 90 L280 PLUS   | 51 | 32     | 2"     | 2"            | 83,5      |           | 217,6      | 280,0      | 96,8      | 44,5      | 50,0      | 21        |

## Piederumi

|                      |                             |
|----------------------|-----------------------------|
| <b>FS</b>            | Bļīvējums SAE un ISO atloki |
| <b>SCHRAUBE M</b>    | lekšējā sešstūra skrūve     |
| <b>SCHRAUBE M VZ</b> | lekšējā sešstūra skrūve     |