

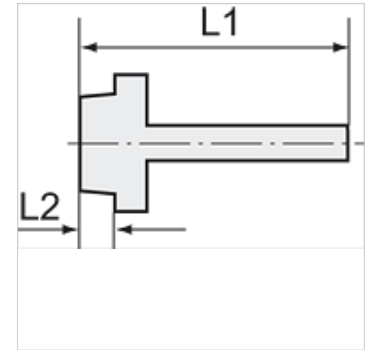
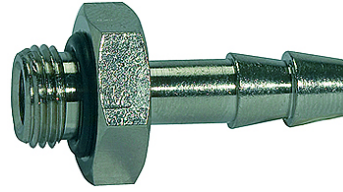
K-TR AG OR MS NI

Male hose fittings, parallel, with O-ring - nickel-plated brass

HANSA FLEX

Īpašības

Ekspluatācijas temperatūra	Max. 80 °C (with O-ring, NBR)
Spiediens	Max. 60 bar
Materiāls	Niķelēts misiņš



Norāde

The dimensions of the standard screw fittings may change slightly during the life of the catalogue as a result of optimisation processes.
Citi dati pieejami pēc pieprasījuma.

Apraksts

Suitable for air, water, oil, steam, etc.

Papildu informācija

Further types and dimensions on request.

Izstrādājums

Apzīmējums	Vītnes	šļūtenei	L1 (mm)	L2 (mm)	SW
K- 07 40 13 59	G 1/8	LW 6 mm	30,0	6,5	14 mm
K- 07 40 13 60	G 1/8	LW 8 mm	31,0	6,0	15 mm
K- 07 40 13 61	G 1/8	LW 9 mm	31,0	6,0	15 mm
K- 07 40 13 62	G 1/4	LW 6 mm	32,0	8,0	17 mm
K- 07 40 13 63	G 1/4	LW 9 mm	33,0	8,0	18 mm
K- 07 40 13 64	G 1/4	LW 12 mm	33,0	8,0	18 mm
K- 07 40 49 89	G 1/4	LW 8 mm	32,0	8,0	17 mm
K- 07 40 49 90	G 1/4	LW 10 mm	33,0	8,0	17 mm
K- 07 40 49 96	G 1/4	LW 13 mm	33,0	8,0	18 mm
K- 07 40 49 97	G 3/8	LW 6 mm	33,0	9,0	20 mm
K- 07 40 49 98	G 3/8	LW 8 mm	33,0	9,0	20 mm
K- 07 40 13 65	G 3/8	LW 9 mm	34,0	9,0	21 mm
K- 07 40 49 91	G 3/8	LW 10 mm	34,0	9,0	20 mm
K- 07 40 13 66	G 3/8	LW 12 mm	34,0	9,0	21 mm
K- 07 40 49 92	G 3/8	LW 13 mm	34,0	9,0	21 mm
K- 07 40 13 67	G 1/2	LW 12 mm	36,0	11,0	26 mm
K- 07 40 49 93	G 1/2	LW 13 mm	36,0	10,0	24 mm
K- 07 40 49 94	G 1/2	LW 16 mm	40,0	10,0	25 mm
K- 07 40 49 95	G 1/2	LW 19 mm	40,0	10,0	24 mm