

K-VHR VALUE LINE MS NI

Screw plugs

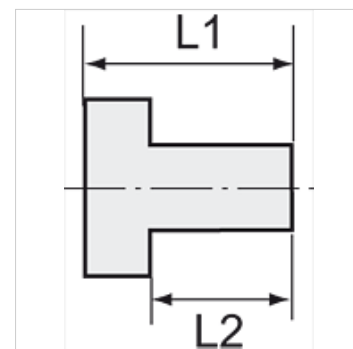
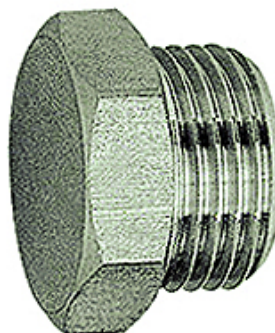
HANSA FLEX

Īpašības

maks. ekspluatācijas spiediens 60 bar

maks. ekspluatācijas temperatūra 150 °C

Materiāls Niķelēts misiņš



Norāde

The dimensions of the standard screw fittings may change slightly during the life of the catalogue as a result of optimisation processes.

Citi dati pieejami pēc pieprasījuma.

Apraksts

For air, water, steam, oil, etc.

Izstrādājums

| Apzīmējums | Vītnes | L1 (mm) | L2 (mm) | SW |
|----------------|--------|------------|------------|-------|
| K- 07 40 40 03 | M 5 | 7,0 | 4,0 | 8 mm |
| K- 07 40 40 04 | G 1/8 | 10,0 | 6,0 | 14 mm |
| K- 07 40 40 05 | G 1/4 | 12,5 | 8,0 | 17 mm |
| K- 07 40 40 06 | G 3/8 | 13,5 | 9,0 | 19 mm |
| K- 07 40 40 07 | G 1/2 | 15,5 | 10,0 | 24 mm |
| K- 07 40 40 08 | G 3/4 | 16,5 | 11,0 | 30 mm |