

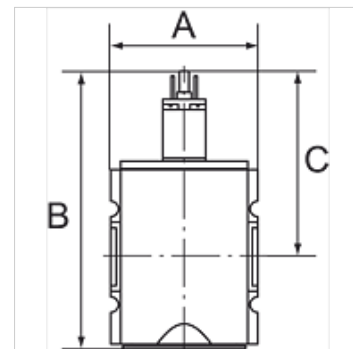
K-WV 3/2 ELK 24 VDC HANSA

3/2-way valves, electrically operated, with 24 VDC / 2.5 W solenoid

HANSA FLEX

Īpašības

| | |
|---|---|
| ļeejas spiediens | 2 - 10 bar |
| Temperatūras diapazons | -10 °C to +50 °C |
| Darba vides | Saspiests gaiss |
| Pievilkšanas jauda maiņspriegumam 50 Hz | 2,2 VA |
| Ieslēgšanas ilgums | ED 100 % |
| Elektriskais pieslēgums | Connector type C, ISO 15217, 2 poles +PE |
| Turēšanas jauda maiņspriegumam 50 Hz | 1,6 VA |
| Jaudas patēriņš DC | 2,5 W |
| Aizsardzības veids | IP 65 |
| Pieslēguma vītne | Material: Die-cast zinc |
| Korpuss | Material: Grivory® (PA 66) |
| Caurplūdes vērtības mērījums | At P2 = 6 bar, pressure drop $\Delta p = 1$ bar |



Norāde

Citi dati pieejami pēc pieprasījuma.

Apraksts

Pneumatic systems or parts of systems can be switched on and off by means of an electrical signal. When they are switched off, the system is exhausted at the same time.

Pasūtījuma norādes

Valves are also available with coil 110 V AC, 50 Hz and in a pneumatically operated version. Please ask for more information.

Izstrādājums

| Apzīmējums | Vītne | Izeja | Caurplūde (L/min) | A (mm) | B | C (mm) |
|----------------|-------|-------|-------------------|--------|----------|--------|
| K- 07 25 11 05 | G 1/4 | 1/4 | 2000 | 52,0 | 117,8 mm | 84,8 |
| K- 07 25 11 06 | G 3/8 | 1/4 | 2000 | 52,0 | 117,8 mm | 84,8 |
| K- 07 25 11 31 | G 3/8 | 1/2 | 4500 | 63,0 | 150,3 mm | 93,8 |
| K- 07 25 11 32 | G 1/2 | 1/2 | 4500 | 63,0 | 150,3 mm | 93,8 |
| K- 07 25 11 37 | G 3/4 | 1/2 | 12500 | 85,0 | 177,7 mm | 110,7 |
| K- 07 25 11 38 | G 1 | 1/2 | 12500 | 85,0 | 177,7 mm | 110,7 |

Piederumi

| | |
|-----------------------------|---|
| K-SCHALLDAE SINTERBR S | Silencers, sintered bronze, slotted |
| K-SCHALLDAE SINTERBR GE MS1 | Silencers, sintered bronze, with brass hexagon nut and brass thread |

Rezerves daļas

| | |
|-------------------------|----------------------------|
| K-HALTERBAUSATZ HANSA | Holder HANSA |
| K-VORSTEUERVENTIL HANSA | Replacement solenoid HANSA |
| K-GERAETESTECKER FORM C | Connector |