

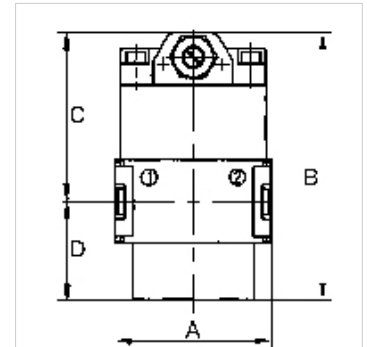
K-ANFAV MULTIFIX MINI

Start-up valves

HANSA FLEX

Īpašības

Ieejas spiediens	Min. 2.5 bar, max. 16 bar
Vielas temperatūra	max. 60 °C
Vides temperatūra	Max. 60 °C
Caurplūde	1600 l/min
Blīvēšanas materiāls	NBR
Korpuss	Die-cast zinc
Caurplūdes vērtības mērījums	At P1 = 6 bar and pressure drop $\Delta p = 1$ bar



Norāde

If several devices in the »multifix-mini« Series are assembled together, the maximum working pressure is 12 bar.

Citi dati pieejami pēc pieprasījuma.

Apraksts

Seat valves operated by secondary pressure for controlled pressurisation of pneumatic systems. The full cross-section of the regulator is opened at 50% of the input pressure. With adjustable restrictor!

Izstrādājums

Apzīmējums	Vītnes	A (mm)	B	C (mm)	D (mm)
K- 07 25 11 53	G 1/4	45,0	77,5 mm	48,5	29,0

Piederumi

K-HALTERBAUSATZ Holder

Rezerves daļas

K-KOPPELPAKET MEHR Coupling packet