

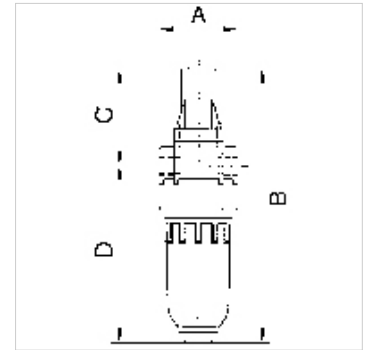
K-NEBELOE METALLBEHAE T STANDARD-M'

Oil-mist lubricators with metal bowl and metal sight dome

HANSA FLEX

Īpašības

| | |
|-------------------------------------|--|
| Ieejas spiediens | Max. 16 bar (polycarbonate bowl), Max. 25 bar (metal bowl) |
| Vielas temperatūra | max. 60 °C |
| Vides temperatūra | Max. 60 °C |
| Caurplūde | 650 l/min |
| Blīvēšanas materiāls | NBR |
| Korpuss | Die-cast zinc, painted silver |
| Pilienu aizsargs | PA (polycarbonate bowl), Zinc-glass-NBR (metal bowl) |
| Elļas veids | CL 32 acc. to DIN 51517 - ISO VG 32 |
| Caurplūdes vērtības mērījums | At P1 = 6 bar and pressure drop $\Delta p = 1$ bar |
| Papildu dati | User manual on request |



Apraksts

Proportional lubricators in compact design, oil can be filled under pressure.

Izstrādājums

| Apzīmējums | Vītnes | A (mm) | B | C (mm) | D (mm) | DN |
|----------------|--------|-----------|----------|-----------|-----------|----|
| K- 07 25 08 84 | G 1/8 | 40,0 | 141,0 mm | 49,0 | 92,0 | 5 |
| K- 07 25 08 86 | G 1/4 | 40,0 | 141,0 mm | 49,0 | 92,0 | 5 |

Rezerves daļas

| | |
|------------------------------|---|
| K-ERSATZBEHAELTER MULTI MINI | Spare tank »multifix-mini« & »standard-mini« |
| K-TROPFAUFSATZ POLYCARBO | Drip attachment polycarbonate |
| K-TROPFAUFSATZ METALL | Drip attachment metal |
| K-LOESBARE DOPPELNIPPEL MS | Double nipples |
| K-XV AGM MS NI | Double nipples, parallel male thread, nickel-plated brass |