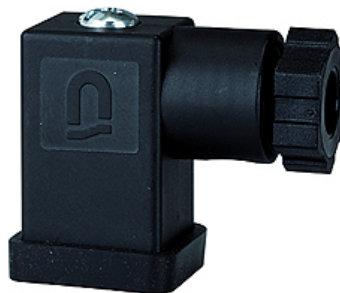


K-GERAETESTECKER FORM C

Connector

HANSA FLEX



Apraksts

Connector

Izstrādājums

| Apzīmējums | Apraksts | Tipizmērs |
|----------------|-----------|-----------|
| K- 07 25 18 08 | Connector | 1 |

ir rezerves daļa šādiem izstrādājumiem

| | |
|-----------------------------------|--|
| K-WV 3/2 ELK 24 VDC HANSA | 3/2-way valves, electrically operated, with 24 VDC / 2.5 W solenoid |
| K-WV 3/2 ELK 230 VAC / 50HZ HANSA | 3/2-way valves, electrically operated, with 230 VAC / 50 Hz solenoid |
| K-BEFUELLEINHEIT 24VDC HANSA | Filling units, electrically operated, with 24 VDC / 2.5 W solenoid, adjustable filling time |
| K-BEFUELLEINHEIT 230V AC HANSA | Filling units, electrically operated, with 230 VAC / 5= Hz solenoid, adjustable filling time |