

# K-TR AG MS NI

Male hose fittings, parallel male thread - nickel plated brass

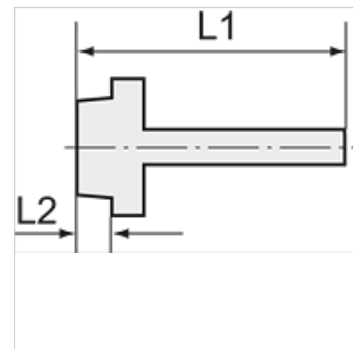
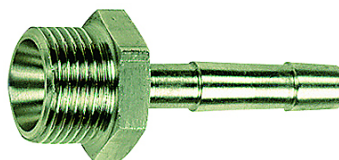
**HANSA FLEX**

## Īpašības

Ekspluatācijas temperatūra Max. 150 °C

Spiediens Max. 60 bar

Materiāls Niķelēts misiņš



## Norāde

The dimensions of the standard screw fittings may change slightly during the life of the catalogue as a result of optimisation processes.

Citi dati pieejami pēc pieprasījuma.

## Apraksts

Suitable for air, water, oil, steam, etc.

## Papildu informācija

Further types and dimensions on request.

## Izstrādājums

Apzīmējums	Vītnes	šļūtenei	L1 (mm)	L2 (mm)	SW
K- 07 40 49 72	G 1/8	LW 6 mm	36,0	7,0	14 mm
K- 07 40 49 73	G 1/8	LW 8 mm	36,0	7,0	14 mm
K- 07 40 49 74	G 1/8	LW 9 mm	36,0	7,0	14 mm
K- 07 40 49 15	G 1/4	LW 4 mm	36,0	9,0	17 mm
K- 07 40 49 18	G 1/4	LW 6 mm	39,0	9,0	17 mm
K- 07 40 49 19	G 1/4	LW 8 mm	39,0	9,0	17 mm
K- 07 40 49 23	G 1/4	LW 9 mm	39,0	9,0	17 mm
K- 07 40 49 24	G 1/4	LW 10 mm	39,0	9,0	17 mm
K- 07 40 49 25	G 1/4	LW 13 mm	42,0	9,0	17 mm
K- 07 40 49 28	G 3/8	LW 8 mm	39,0	9,0	19 mm
K- 07 40 49 32	G 3/8	LW 9 mm	39,0	9,0	19 mm
K- 07 40 49 33	G 3/8	LW 10 mm	39,0	9,0	19 mm
K- 07 40 49 35	G 3/8	LW 13 mm	42,0	9,0	19 mm
K- 07 40 49 38	G 1/2	LW 8 mm	42,0	11,0	24 mm
K- 07 40 49 41	G 1/2	LW 9 mm	42,0	11,0	24 mm
K- 07 40 49 42	G 1/2	LW 10 mm	42,0	11,0	24 mm
K- 07 40 49 47	G 1/2	LW 13 mm	45,0	11,0	24 mm
K- 07 40 49 48	G 1/2	LW 16 mm	53,0	11,0	24 mm
K- 07 40 49 49	G 1/2	LW 19 mm	53,0	11,0	24 mm
K- 07 40 49 50	G 3/4	LW 13 mm	51,0	12,0	32 mm
K- 07 40 49 51	G 3/4	LW 16 mm	51,0	12,0	32 mm
K- 07 40 49 53	G 3/4	LW 19 mm	54,0	12,0	32 mm
K- 07 40 49 55	G 3/4	LW 25 mm	54,0	12,0	32 mm
K- 07 40 49 60	G 1	LW 25 mm	49,0	15,0	34 mm
K- 07 40 49 68	G 1	LW 32 mm	55,0	13,0	38 mm