

# K-TR AG-K

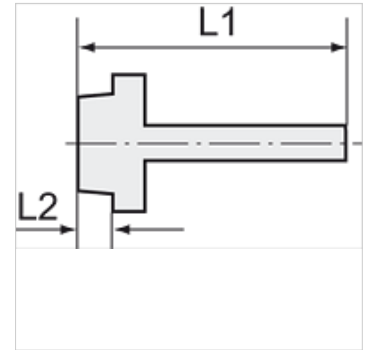
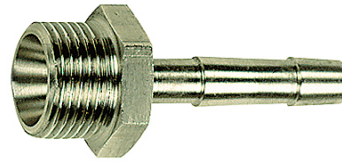
Male hose fittings with conical male thread

**HANSA FLEX**

## Īpašības

Darba spiediens Max. 20 bar

Materiāls Nerūsējošais tērauds 1.4571



## Norāde

The dimensions of the standard screw fittings may change slightly during the life of the catalogue as a result of optimisation processes.

Citi dati pieejami pēc pieprasījuma.

## Papildu informācija

Further types and dimensions on request.

## Izstrādājums

Apzīmējums	Vītnes	šļūtenei	L1 (mm)	L2 (mm)	SW
K- 07 40 49 22	R 1/4	LW 9 mm	39,7	9,7	17 mm
K- 07 40 49 31	R 3/8	LW 9 mm	40,1	10,1	19 mm
K- 07 40 49 34	R 3/8	LW 13 mm	43,1	10,1	19 mm
K- 07 40 49 45	R 1/2	LW 13 mm	47,2	13,2	24 mm
K- 07 40 49 46	R 1/2	LW 19 mm	55,2	13,2	24 mm
K- 07 40 49 52	R 3/4	LW 19 mm	56,2	14,5	32 mm
K- 07 40 49 59	R 1	LW 25 mm	58,8	16,8	38 mm