

K-UEM MS NI

Hexagonal swivel nuts - nickel plated brass

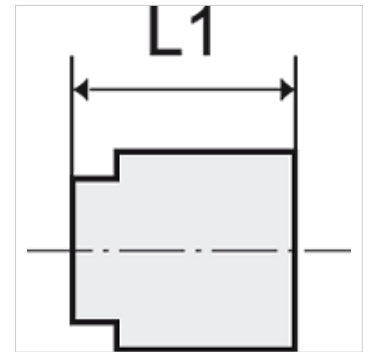
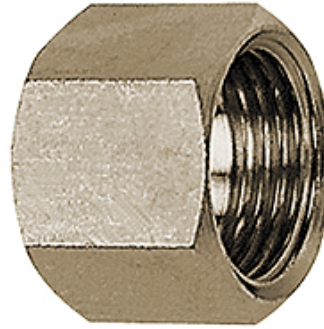
HANSA FLEX

Īpašības

Ekspluatācijas temperatūra Max. 150 °C

Spiediens Max. 60 bar

Materiāls Niķelēts misiņš



Norāde

The dimensions of the standard screw fittings may change slightly during the life of the catalogue as a result of optimisation processes.

Citi dati pieejami pēc pieprasījuma.

Apraksts

Suitable for air, water, oil, steam, etc.

Papildu informācija

Further types and dimensions on request.

Izstrādājums

Apzīmējums	Vītnes	Iemavas izmēram	L1 (mm)	SW
K- 07 40 44 22	G 1/8	I.D. 4, I.D. 6	13,0	14 mm
K- 07 40 44 23	G 1/4	I.D. 4, I.D. 6	15,0	17 mm
K- 07 40 44 24	G 3/8	I.D. 9	15,0	19 mm
K- 07 40 44 25	G 1/2	I.D. 4, I.D. 6, I.D. 9	16,0	24 mm