

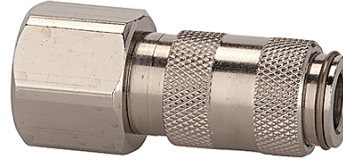
# K-SVKM NW 2,7 IG VA

Quick disconnect couplings DN 2.7, stainless steel 1.4404, female

**HANSA FLEX**

## Īpašības

<b>Ekspluatācijas spiediens</b>	0 - 35 bar, maximum static working pressure (non-pulsating)
<b>Gaisa caurplūde</b>	165 l/min (at 6 bar and $\Delta p = 0.5$ bar)
<b>Vielas temperatūra</b>	-15 °C to +200 °C
<b>Korpuss, uzdeva, vārsta korpuss</b>	Stainless steel 1.4404
<b>Atspere, sprostgredzens, lodes</b>	Stainless steel 1.4404
<b>Blīvēšanas materiāls</b>	FKM



## Norāde

Citi dati pieejami pēc pieprasījuma.

## Apraksts

One-hand quick disconnect couplings, one side sealing, extremely compact with a large bore and only a small pressure drop. Ideal for: Medical equipment, chemical and pharmaceutical industry, laboratories, plant construction and butchers.

## Izstrādājums

Apzīmējums	Savienojums	Garums (mm)	SW (mm)
K- 07 35 12 47	M 5 female	25,0	9
K- 07 35 12 48	G 1/8 female	28,0	12