

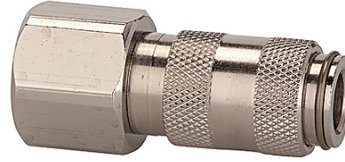
K-SVKM NW 2,7 IG MS NI

Quick disconnect couplings DN 2.7, nickel-plated brass, female

HANSA FLEX

Īpašības

Ekspluatācijas spiediens	0 - 35 bar, maximum static working pressure (non-pulsating)
Gaisa caurplūde	165 l/min (at 6 bar and $\Delta p = 0.5$ bar)
Vielas temperatūra	-20 °C to +100 °C
Korpuss, uzmava, vārsta korpuss	Nickel-plated brass
Atspere, sprostgredzens, lodes	stain less steel
Bīvēšanas materiāls	NBR



Norāde

Citi dati pieejami pēc pieprasījuma.

Apraksts

One-hand quick disconnect coupling, one side sealing, extremely compact, with a large bore and a small pressure drop. Ideal for: Medical & Dental equipment, instrumentation and control, laboratory equipment, chemical applications, small tools, analysis, miniature pneumatics, engineering.

Izstrādājums

Apzīmējums	Savienojums	Garums (mm)	SW (mm)
K- 07 35 06 20	M 5 female	25,0	9
K- 07 35 06 21	G 1/8 female	28,0	12