

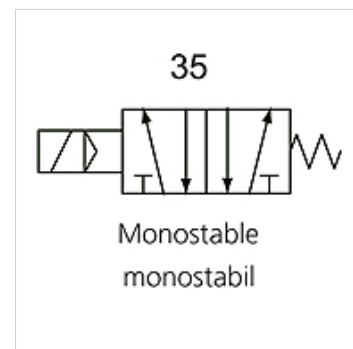
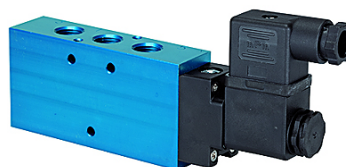
K-WV 5/2 EINS ELEKTRO

5/2-way spool valves, single solenoid

HANSA FLEX

Īpašības

Funkcija	5/2-way
Ekspluatācijas spiediens	2.5 - 10 bar; Max. vacuum 10 bar (external pilot air)
min. darba spiediens	2,5 bar
Temperatūras diapazons	-10 °C to +60 °C
Caurplūde 6 bar un 10 bar	1500 NI/min (G 1/4), 4600 NI/min (G 1/2)
Elektriskais pieslēgums	Coupler plug PG 9 - form B
Aizsardzības veids	IP 65 (DIN 46244)
Korpuss	Anodised aluminium, blue
Virzūlveida plūsmdaļis	Stainless steel
Bīvēšanas materiāls	NBR



Norāde

Citi dati pieejami pēc pieprasījuma.

Apraksts

This valve design, featuring the Tapered Tee Seal®, offers the ability to run without lubrication and supports almost any compressed air quality. The valves are largely resistant to dirt and can thus also be used under extreme conditions without any problems. Leakage is now a thing of the past and the spool no longer sticks, even after long idle periods.

Izstrādājums

Apzīmējums	Savienojums	Spriegums	DN	Slēguma shēmas numurs	Vadība
K- 07 15 02 21	G 1/4	24 V DC	8	35	
K- 07 15 02 22	G 1/2"	24 V DC	15	35	
K- 07 15 02 23	G 1/4	230 V AC, 50 Hz	8	35	
K- 07 15 02 24	G 1/2"	230 V AC, 50 Hz	15	35	