

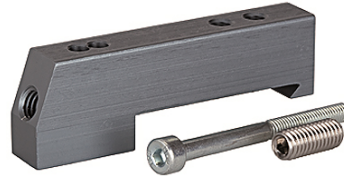
K-ADA HUTPROFIL

Adapter for DIN rail

HANSA FLEX

Īpašības

Darba vides	Filtered, unlubricated or lubricated compressed air. If lubrication is used, it must be continuous.
Darba spiediens	Max. vacuum 10 bar (external pilots), 3 to 7 bar (internal pilots as standard)
Regulēšanas spiediens	3 - 7 bar
Temperatūras diapazons	-10 °C to +60 °C
Caurplūde	200 NI/min (Ø 4), 500 NI/min (Ø 6), 800 NI/min (Ø 8)
Vadību skaits	Max. 16 (e.g. 16 spring return valves)
Manuāla palīgvadība	Latching (bistable), Monostable (non-latching) version also available on request
Jaudas patēriņš	0.6 W per pilot
Aizsardzības veids	IP 65



Norāde

Citi dati pieejami pēc pieprasījuma.

Apraksts

These compact valve terminals, with a maximum flow rate of 800 NI/min, can be individually adapted to the specific conditions of each application thanks to the wide range of functions and various input and intermediate plates. Since each valve terminal is a customer-specific combination of a series of individual elements, the catalogue only lists the available input, intermediate and end plates as well as the different valve discs and the 25-pin multi-pole connectors.

Papildu informācija

Important: The scope of supply does not include a connector. Please order separately.

Izstrādājums

Apzīmējums	Definīcija
K- 07 15 22 43	Adapter for DIN rail