

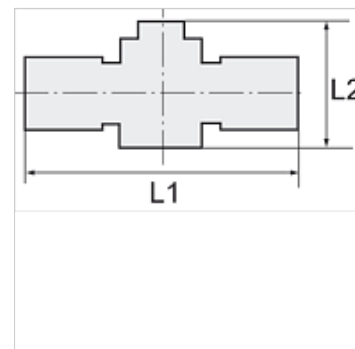
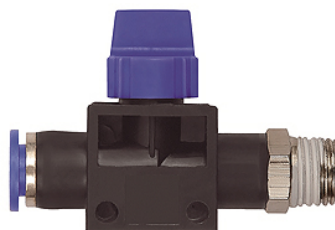
K-WV 3/2 STECK SCHL GEW 2

3/2-way pilot valves with male thread and plug connection, tube to flow direction from port, conical male thread, coated

HANSA FLEX

Īpašības

Darba spiediens	Max. 15 bar, coarse vacuum
Izmantošana	Air, vacuum
ieteicamās šļūtenes	PU or PA (nylon)
Darba vides	Compressed air and all gases or liquids that are compatible with the materials
Temperatūras diapazons	-20 °C to +80 °C
Blīvēšanas virsma	Parallel version: O-ring in housing, Conical version: thread coating
Materiāls	Plastic, Nickel plated brass
Piespiedējgredzens	Plastic



Norāde

Citi dati pieejami pēc pieprasījuma.

Apraksts

Push-in fittings series manufactured in plastic and nickel-plated brass. All parts are suitable for use with hoses, tubes or pipes made of plastic and copper.

Izstrādājums

Apzīmējums	Vītnes	šļūtenes ārējam Ø	L1 (mm)	L2 (mm)	SW
K- 07 40 46 13	R 1/8	6 mm	58,3	41,5	12 mm
K- 07 40 46 14	R 1/8	8 mm	58,9	41,5	14 mm
K- 07 40 46 11	R 1/4	6 mm	60,8	41,5	14 mm
K- 07 40 46 12	R 1/4	8 mm	60,9	41,5	14 mm
K- 07 40 46 09	R 1/4	10 mm	72,6	46,0	17 mm
K- 07 40 46 10	R 1/4	12 mm	73,3	46,0	21 mm
K- 07 40 46 19	R 3/8	6 mm	62,3	41,5	17 mm
K- 07 40 46 20	R 3/8	8 mm	62,4	41,5	17 mm
K- 07 40 46 17	R 3/8	10 mm	73,6	46,0	17 mm
K- 07 40 46 18	R 3/8	12 mm	74,1	46,0	21 mm
K- 07 40 46 07	R 1/2	10 mm	77,1	46,0	21 mm
K- 07 40 46 08	R 1/2	12 mm	77,3	46,0	21 mm