

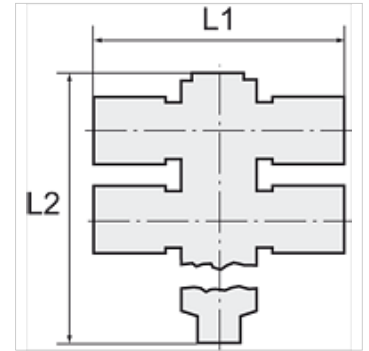
K-T-MEHRF-VERT 4 DREH 2

Multiple union elbows with inner hex, 4 outlets, swivel type, parallel male thread with O-ring

HANSA FLEX

Īpašības

Darba spiediens	Max. 16 bar
Ekspluatācijas temperatūra	-20 °C to +80 °C
Materiāls	Niķelēts misiņš
Piespiedējgredzens	Hostaform
Blīvgredzens	NBR
Iespīlēšanas gredzens	Stainless steel



Norāde

Citi dati pieejami pēc pieprasījuma.

Apraksts

The advanced version of our highly successful push-in fittings series manufactured in nickel-plated brass. Advantages of this new, optimised series: Much easier connection and disconnection of the hose, even with repeated mounting, can also be used for non-calibrated hoses, suitable for vacuum operation.

Izstrādājums

Apzīmējums	Vītnes	šļūtenes ārējam Ø	L1 (mm)	L2 (mm)	SW
K- 07 40 26 64	M 5	4 mm	40,4	29,9	2 mm
K- 07 40 26 65	M 5	6 mm	47,0	29,9	2 mm
K- 07 40 26 69	G 1/8	4 mm	40,4	40,9	3 mm
K- 07 40 26 70	G 1/8	6 mm	46,0	41,1	3 mm
K- 07 40 26 71	G 1/8	8 mm	49,6	41,1	3 mm
K- 07 40 26 67	G 1/4	6 mm	49,0	47,0	4 mm
K- 07 40 26 68	G 1/4	8 mm	53,0	47,0	4 mm
K- 07 40 26 66	G 1/4	10 mm	62,8	47,0	4 mm