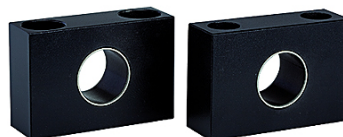


# K-SCHWENKLAGER TYP TM

Hinge model, »TM« type (only in conjunction with hinge head model,  
»FTC« type)

**HANSA FLEX**



## Izstrādājums

| Apzīmējums     | Ø virzulim   |
|----------------|--------------|
| K- 07 15 23 74 | 32 mm        |
| K- 07 15 23 75 | 40 - 50 mm   |
| K- 07 15 23 76 | 63 - 80 mm   |
| K- 07 15 23 77 | 100 - 125 mm |

## ir piederums šādiem izstrādājumiem

**K-NORMZYLINDER AIRSENTIALS SE** Standard cylinders - AirSentials