

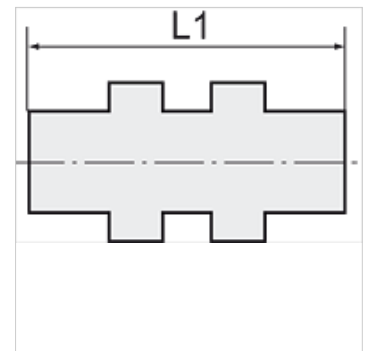
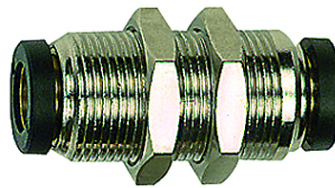
K-SCHOTT-STECKVERB 4

Female bulkhead connectors

HANSA FLEX

Īpašības

Darba spiediens	Max. 16 bar
Ekspluatācijas temperatūra	-20 °C to +80 °C
Materiāls	Niķelēts misiņš
Piespiedējgredzens	Hostaform
Iespīlēšanas gredzens	Stainless steel



Norāde

Citi dati pieejami pēc pieprasījuma.

Apraksts

The advanced version of our highly successful push-in fittings series manufactured in nickel-plated brass. Advantages of this new, optimised series: Much easier connection and disconnection of the hose, even with repeated mounting, can also be used for non-calibrated hoses, suitable for vacuum operation.

Izstrādājums

Apzīmējums	Vītnes	šļūtenes ārējam Ø	L1 (mm)	SW
K- 07 40 47 16	M 8 x 0.75	3 mm	18,4	10 mm
K- 07 40 25 50	M 11 x 1	4 mm	30,6	13 mm
K- 07 40 25 52	M 14 x 1	5 mm	33,5	17 mm
K- 07 40 25 53	M 13 x 1	6 mm	33,0	16 mm
K- 07 40 25 56	M 15 x 1	8 mm	35,7	17 mm
K- 07 40 25 59	M 17 x 1	10 mm	39,2	20 mm
K- 07 40 25 60	M 20 x 1	12 mm	40,7	24 mm
K- 07 40 25 61	M 24 x 1	14 mm	45,9	27 mm