

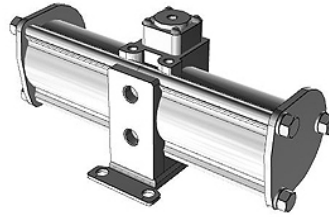
K-DRUCKVERST VBA

Booster Regulator, VBA

HANSA FLEX

Īpašības

min. ekspluatācijas spiediens	0.20 MPa
Pneimatiskā manometra pieslēgums	Rc 1/8
Pneimatisko manometru pieslēgumu skaits	2
maks. ieejas spiediens	0,1 to 1,0 MPa
Vielas temperatūra	+2 °C to +50 °C
Vides temperatūra	+2 °C bis +50 °C
Darba vides	Saspiests gaiss
Papildu dati	increases the pressure only where the force is insufficient due to low factory pressure (measure to save energy) no power supply required extended life: doubled compared to the conventional model improved reliability through built-in strainer on (IN terminal) Compressed air inlet reduced condensation: Venting channels directly integrated in the cylinder tube Reduced noise: 13 dB (A)



Apraksts

Booster regulator, series VBA, increases pressure only where the force is inadequate because of a low network pressure (energy saving measure), no electricity supply necessary, longer service life: doubled compared to conventional model, lower operating noise level: 13 dB (A), improved operational reliability from inbuilt mesh filter on (IN connection) compressed air inlet, reduced condensation levels: air exhaust channels integrated directly into the cylinder tube, suitable for: compressed air, size 1/4, with pressure gauge and silencer, elbow, pneumatic connection: G 1/4, pneumatic connection pressure gauge: G 1/8, pneumatic connections pressure gauge: 2, flow rate 230 l/min, pressure boost 1:2, manually actuated pressure adjustment mechanism, test pressure: 3 MPa, max. operating pressure: 2 MPa, min. operating pressure: 0.2 MPa, media temperature: +2 to +50 °C, ambient temperature: +2 to +50 °C

Izstrādājums

Apzīmējums	Pneimatiskais pieslēgums	Tipiz-ērs	Spiediena iestafēšanas mehānisms	Spiediena pastiprināšanas process	Caurplūde (L/min)	maks. ekspluatācijas spiediens (MPa)	Izmēģinājuma spiediens (MPa)
K- 07 60 00 06	G 1/4	1/4	manually operated	1:2 to 1:4	70	2,00	3,00
K- 07 60 00 01	G 1/4	1/4	manually operated	1:2	230	2,00	3,00
K- 07 60 00 08	G 3/8	3/8	manually operated	1:2	1000	1,00	1,50
K- 07 60 00 12	G 3/8	3/8	pneumatically actuated	1:2	1000	1,00	1,50
K- 07 60 00 13	G 1/2	1/2	manually operated	1:2	1900	1,00	1,50
K- 07 60 00 14	G 1/2	1/2	pneumatically actuated	1:2	1900	1,00	1,50
K- 07 60 00 15	G 1/2	1/2	manually operated	1:2	1600	1,60	2,40