

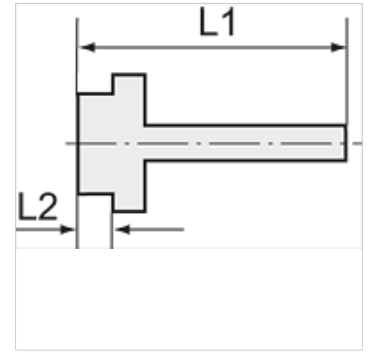
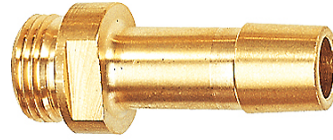
K-EST 12 MS

Male stems for coupling NW12 MS

HANSA FLEX

Īpašības

| | |
|--------------------|---------------------------------|
| Darba spiediens | 10 bar |
| Vielas temperatūra | max. +90 °C |
| Vides temperatūra | Max. +90 °C |
| Materiāls | Brass with a bare metal surface |



Norāde

The dimensions of the standard screw fittings may change slightly during the life of the catalogue as a result of optimisation processes.
Citi dati pieejami pēc pieprasījuma.

Papildu informācija

Further types and dimensions on request.

Izstrādājums

| Apzīmējums | Vītnes | šļūtenei | L1 (mm) | L2 (mm) | SW |
|----------------|--------|----------|------------|------------|-------|
| K- 07 35 00 88 | G 1/2 | LW 16 mm | 58,0 | 10,0 | 20 mm |