

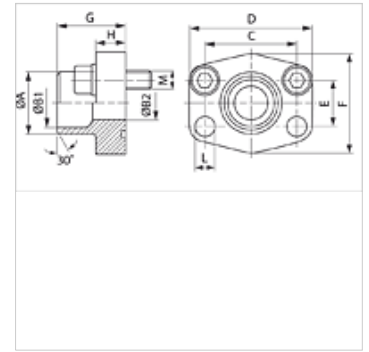
AFS SRE U (3000 / 6000 PSI)

SAE-aanlaskraag

HANSA FLEX

Eigenschappen

| | |
|----------------------|-----------------------------|
| Norm | SAE J 518 C ISO 6162 |
| Uitvoering | recht |
| Constructie | SAE-aanlaskraag |
| Bevestiging | Boutenboring |
| Leveromvang | Met UNC boutenset en O-ring |
| Materiaal | S355J2G3 (ST52.3) |
| Oppervlakbescherming | Zwart geolied |



Aanwijzing

De genoemde maximale werkdruk geldt voor de flens! De werkelijke werkdruk wordt bepaald door de wanddikte en de kwaliteit van de buis!

Artikel

| Aanduiding | Drukserie | PB 10.9 | Maat | Buis | A | B1 | B2 | G | C | D | E | F | H | L | M unc |
|------------------|-----------|---------|--------|-------------|------|------|------|------|-------|------|------|------|------|------|----------------|
| | | (bar) | | | (mm) | (mm) | (mm) | (mm) | (mm) | (mm) | (mm) | (mm) | (mm) | (mm) | |
| AFS 80 SRE 20 U | 3000 PSI | 350 | 1/2" | 20 x 3 | 20 | 14,0 | 14 | 35,0 | 38,1 | 54 | 17,5 | 46 | 16,0 | 9,0 | 5/16" x 1.1/4" |
| AFS 80 SRE 22 U | 3000 PSI | 350 | 1/2" | 22 x 3 | 22 | 16,0 | 13 | 35,0 | 38,1 | 54 | 17,5 | 46 | 16,0 | 9,0 | 5/16" x 1.1/4" |
| AFS 100 SRE 25 U | 3000 PSI | 350 | 3/4" | 25 x 3 | 25 | 19,0 | 19 | 36,0 | 47,6 | 65 | 22,2 | 50 | 18,0 | 11,0 | 3/8" x 1.1/2" |
| AFS 100 SRE 28 U | 3000 PSI | 350 | 3/4" | 28 x 3 | 28 | 21,5 | 19 | 36,0 | 47,6 | 65 | 22,2 | 50 | 18,0 | 11,0 | 3/8" x 1.1/2" |
| AFS 102 SRE 30 U | 3000 PSI | 315 | 1" | 30 x 4 | 30 | 22,0 | 22 | 38,0 | 52,4 | 70 | 26,2 | 55 | 18,0 | 11,0 | 3/8" x 1.1/2" |
| AFS 102 SRE 35 U | 3000 PSI | 315 | 1" | 35 x 4 | 35 | 27,0 | 25 | 38,0 | 52,4 | 70 | 26,2 | 55 | 18,0 | 11,0 | 3/8" x 1.1/2" |
| AFS 104 SRE 38 U | 3000 PSI | 250 | 1.1/4" | 38 x 4 | 38 | 30,0 | 30 | 41,0 | 58,7 | 79 | 30,2 | 68 | 21,0 | 11,5 | 7/16" x 1.1/2" |
| AFS 104 SRE 42 U | 3000 PSI | 250 | 1.1/4" | 42 x 3 | 43 | 36,0 | 31 | 41,0 | 58,7 | 79 | 30,2 | 68 | 21,0 | 11,5 | 7/16" x 1.1/2" |
| AFS 106 SRE 38 U | 3000 PSI | 200 | 1.1/2" | 38 x 4 | 38 | 30,0 | 30 | 44,5 | 69,9 | 93 | 35,7 | 78 | 24,5 | 13,5 | 1/2" x 1.3/4" |
| AFS 106 SRE 42 U | 3000 PSI | 200 | 1.1/2" | 42 x 3 | 42 | 36,0 | 36 | 44,5 | 69,9 | 93 | 35,7 | 78 | 24,5 | 13,5 | 1/2" x 1.3/4" |
| AFS 106 SRE 48 U | 3000 PSI | 200 | 1.1/2" | 48,3 x 4,5 | 49 | 38,0 | 38 | 44,5 | 69,9 | 93 | 35,7 | 78 | 24,5 | 13,5 | 1/2" x 1.3/4" |
| AFS 108 SRE 60 U | 3000 PSI | 200 | 2" | 60,3 x 5,6 | 61 | 49,0 | 49 | 45,0 | 77,8 | 102 | 42,9 | 90 | 25,0 | 13,5 | 1/2" x 1.3/4" |
| AFS 110 SRE 76 U | 3000 PSI | 160 | 2.1/2" | 76,1 x 7,1 | 77 | 62,0 | 62 | 50,0 | 88,9 | 114 | 50,8 | 105 | 25,0 | 13,5 | 1/2" x 1.3/4" |
| AFS 112 SRE 76 U | 3000 PSI | 160 | 3" | 76,1 x 7,1 | 77 | 62,0 | 62 | 51,0 | 106,4 | 134 | 61,9 | 124 | 26,0 | 17,5 | 5/8" x 2" |
| AFS 401 SRE 20 U | 6000 PSI | 400 | 1/2" | 20 x 3 | 20 | 14,0 | 14 | 34,0 | 40,5 | 54 | 18,2 | 46 | 16,0 | 9,0 | 5/16" x 1.1/4" |
| AFS 402 SRE 20 U | 6000 PSI | 400 | 3/4" | 20 x 3 | 20 | 14,0 | 14 | 35,0 | 50,8 | 71 | 23,8 | 55 | 21,0 | 11,0 | 3/8" x 1.1/2" |
| AFS 402 SRE 25 U | 6000 PSI | 400 | 3/4" | 25 x 4 | 25 | 17,0 | 17 | 35,0 | 50,8 | 71 | 23,8 | 55 | 21,0 | 11,0 | 3/8" x 1.1/2" |
| AFS 403 SRE 25 U | 6000 PSI | 400 | 1" | 25 x 4 | 25 | 17,0 | 17 | 42,0 | 57,2 | 81 | 27,8 | 65 | 25,0 | 13,0 | 7/16" x 1.1/2" |
| AFS 403 SRE 30 U | 6000 PSI | 400 | 1" | 30 x 4 | 30 | 22,0 | 22 | 42,0 | 57,2 | 81 | 27,8 | 65 | 25,0 | 13,0 | 7/16" x 1.1/2" |
| AFS 404 SRE 30 U | 6000 PSI | 400 | 1.1/4" | 30 x 4 | 30 | 22,0 | 22 | 44,0 | 66,7 | 95 | 31,8 | 78 | 25,0 | 15,0 | 1/2" x 1.3/4" |
| AFS 404 SRE 38 U | 6000 PSI | 400 | 1.1/4" | 38 x 6 | 38 | 26,0 | 26 | 44,0 | 66,7 | 95 | 31,8 | 78 | 25,0 | 15,0 | 1/2" x 1.3/4" |
| AFS 405 SRE 38 U | 6000 PSI | 400 | 1.1/2" | 38 x 6 | 38 | 26,0 | 26 | 56,0 | 49,4 | 112 | 36,5 | 94 | 28,0 | 17,0 | 5/8" x 2" |
| AFS 405 SRE 48 U | 6000 PSI | 400 | 1.1/2" | 48,3 x 8 | 49 | 32,0 | 32 | 56,0 | 79,4 | 112 | 36,5 | 94 | 28,0 | 17,0 | 5/8" x 2" |
| AFS 405 SRE 60 U | 6000 PSI | 400 | 1.1/2" | 60,3 x 10 | 61 | 40,0 | 40 | 56,0 | 79,4 | 112 | 36,5 | 94 | 27,0 | 17,0 | 5/8" x 2" |
| AFS 406 SRE 60 U | 6000 PSI | 400 | 2" | 60,3 x 10 | 61 | 40,0 | 40 | 65,0 | 96,8 | 134 | 44,5 | 114 | 37,0 | 21,0 | 3/4" x 2.1/2" |
| AFS 406 SRE 76 U | 6000 PSI | 400 | 2" | 76,1 x 12,5 | 76 | 50,0 | 48 | 80,0 | 96,8 | 134 | 44,5 | 122 | 33,0 | 21,0 | 3/4" x 2.1/2" |

PN = nominale druk PB = max. werkdruk - *) AFS 118 STRE 139.7: uitvoering als vlakke flens voor inlassen.

Productvarianten

| | |
|-----------------------------|--|
| AFS SRE (3000 PSI) | SAE-aanlaskraag, Alleen flens |
| AFS SRE M (3000 / 6000 PSI) | SAE-aanlaskraag, Met metrische boutenset en O-ring |