

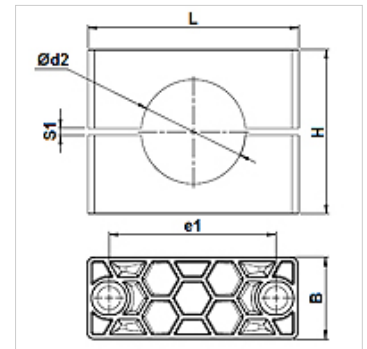
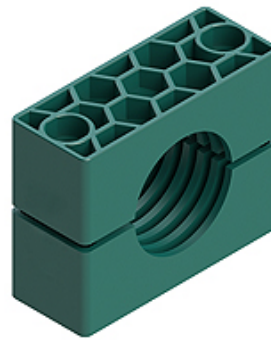
# SRS 30-100 PP

Buisklem, zware serie

**HANSA FLEX**

## Eigenschappen

|                        |                                   |
|------------------------|-----------------------------------|
| Constructie            | Enkele buisklem                   |
| Constructie-toevoeging | Binnenkant van de klem met ribben |
| Serie                  | Zwaar                             |
| Norm                   | DIN 3015-2                        |
| Temperatuur min.       | -30 °C                            |
| Temperatuur max.       | 90 °C                             |
| Materiaal              | Polypropyleen                     |



## Aanwijzing

Voor het vasthouden van slangen en kabels wordt het gebruik van klemmen met gladde binnenkant aanbevolen. De montage wordt dan zonder voorspanning verricht, waardoor de blokhoogte H met de spleetmaat S1 wordt verkleind.

## Beschrijving

Ribben aan de binnenkant van de klemmen werken slag- en trillingsdempend en nemen krachten in buisrichting op. Een spleet tussen de helften zorgt voor de voorspanning van de buis.

## Bestelaanwijzingen

1 stuk = 2 klemhelften

## Artikel

| Aanduiding    | Maat klem | Uitw. Ø buis d2<br>(mm) | Uitw. Ø buis d2 | B<br>(mm) | e1<br>(mm) | H<br>(mm) | L<br>(mm) | S1<br>(mm) |
|---------------|-----------|-------------------------|-----------------|-----------|------------|-----------|-----------|------------|
| SRS 3006 PP   | 1         | 6,0                     | -               | 30        | 33         | 32        | 56        | 2          |
| SRS 3008 PP   | 1         | 8,0                     | 5/16"           | 30        | 33         | 32        | 56        | 2          |
| SRS 3010 PP   | 1         | 10,0                    | -               | 30        | 33         | 32        | 56        | 2          |
| SRS 3012 PP   | 1         | 12,0                    | -               | 30        | 33         | 32        | 56        | 2          |
| SRS 3012.7 PP | 1         | 12,7                    | 1/2"            | 30        | 33         | 32        | 56        | 2          |
| SRS 3013.5 PP | 1         | 13,5                    | -               | 30        | 33         | 32        | 56        | 2          |
| SRS 3014 PP   | 1         | 14,0                    | -               | 30        | 33         | 32        | 56        | 2          |
| SRS 3015 PP   | 1         | 15,0                    | -               | 30        | 33         | 32        | 56        | 2          |
| SRS 3016 PP   | 1         | 16,0                    | 5/8"            | 30        | 33         | 32        | 56        | 2          |
| SRS 3017.2 PP | 1         | 17,2                    | -               | 30        | 33         | 32        | 56        | 2          |
| SRS 3018 PP   | 1         | 18,0                    | -               | 30        | 33         | 32        | 56        | 2          |
| SRS 4019 PP   | 2         | 19,0                    | 3/4"            | 30        | 45         | 48        | 71        | 2          |
| SRS 4020 PP   | 2         | 20,0                    | -               | 30        | 45         | 48        | 71        | 2          |
| SRS 4021.3 PP | 2         | 21,3                    | -               | 30        | 45         | 48        | 71        | 2          |
| SRS 4022 PP   | 2         | 22,0                    | -               | 30        | 45         | 48        | 71        | 2          |
| SRS 4023 PP   | 2         | 23,0                    | -               | 30        | 45         | 48        | 71        | 2          |
| SRS 4025 PP   | 2         | 25,0                    | 1"              | 30        | 45         | 48        | 71        | 2          |
| SRS 4026.9 PP | 2         | 26,9                    | -               | 30        | 45         | 48        | 71        | 2          |
| SRS 4028 PP   | 2         | 28,0                    | -               | 30        | 45         | 48        | 71        | 2          |
| SRS 4030 PP   | 2         | 30,0                    | -               | 30        | 45         | 48        | 71        | 2          |
| SRS 5030 PP   | 3         | 30,0                    | -               | 30        | 60         | 60        | 86        | 2          |
| SRS 5032 PP   | 3         | 32,0                    | 1.1/4"          | 30        | 60         | 60        | 86        | 2          |
| SRS 5033.7 PP | 3         | 33,7                    | -               | 30        | 60         | 60        | 86        | 2          |
| SRS 5035 PP   | 3         | 35,0                    | -               | 30        | 60         | 60        | 86        | 2          |
| SRS 5038 PP   | 3         | 38,0                    | 1.1/2"          | 30        | 60         | 60        | 86        | 2          |
| SRS 5040 PP   | 3         | 40,0                    | -               | 30        | 60         | 60        | 86        | 2          |
| SRS 5042 PP   | 3         | 42,0                    | -               | 30        | 60         | 60        | 86        | 2          |
| SRS 6038 PP   | 4         | 38,0                    | 1.1/2"          | 45        | 90         | 90        | 117       | 3          |
| SRS 6040 PP   | 4         | 40,0                    | -               | 45        | 90         | 90        | 117       | 3          |
| SRS 6042 PP   | 4         | 42,0                    | -               | 45        | 90         | 90        | 117       | 3          |
| SRS 6045 PP   | 4         | 45,0                    | -               | 45        | 90         | 90        | 117       | 3          |
| SRS 6048.3 PP | 4         | 48,3                    | -               | 45        | 90         | 90        | 117       | 3          |
| SRS 6050 PP   | 4         | 50,0                    | -               | 45        | 90         | 90        | 117       | 3          |
| SRS 6051 PP   | 4         | 51,0                    | 2"              | 45        | 90         | 90        | 117       | 3          |
| SRS 6052 PP   | 4         | 52,0                    | -               | 45        | 90         | 90        | 117       | 3          |
| SRS 6055 PP   | 4         | 55,0                    | -               | 45        | 90         | 90        | 117       | 3          |



Hoewel wij zeer zorgvuldig te werk gaan, kunnen wij fouten niet volledig uitsluiten en daarom niet aansprakelijkheid gesteld worden voor de vermelde gegevens.

24.04.2025

HANSA-FLEX AG

www.hansa-flex.com

1

# SRS 30-100 PP

Buisklem, zware serie

**HANSA FLEX**

## Artikel

| Aanduiding     | Maat klem | Uitw. Ø buis d2<br>(mm) | Uitw. Ø buis d2 | B<br>(mm) | e1<br>(mm) | H<br>(mm) | L<br>(mm) | S1<br>(mm) |
|----------------|-----------|-------------------------|-----------------|-----------|------------|-----------|-----------|------------|
| SRS 6057 PP    | 4         | 57,0                    | 2.1/4"          | 45        | 90         | 90        | 117       | 3          |
| SRS 6060.3 PP  | 4         | 60,3                    | -               | 45        | 90         | 90        | 117       | 3          |
| SRS 6063 PP    | 4         | 63,0                    | 2.1/2"          | 45        | 90         | 90        | 117       | 3          |
| SRS 6065 PP    | 4         | 65,0                    | -               | 45        | 90         | 90        | 117       | 3          |
| SRS 6070 PP    | 4         | 70,0                    | -               | 45        | 90         | 90        | 117       | 3          |
| SRS 7070 PP    | 5         | 70,0                    | -               | 60        | 122        | 120       | 154       | 5          |
| SRS 7073 PP    | 5         | 73,0                    | -               | 60        | 122        | 120       | 154       | 5          |
| SRS 7075 PP    | 5         | 75,0                    | -               | 60        | 122        | 120       | 154       | 5          |
| SRS 7076.1 PP  | 5         | 76,1                    | 3"              | 60        | 122        | 120       | 154       | 5          |
| SRS 7080 PP    | 5         | 80,0                    | -               | 60        | 122        | 120       | 154       | 5          |
| SRS 7082.5 PP  | 5         | 82,5                    | 3.1/4"          | 60        | 122        | 120       | 154       | 5          |
| SRS 7088.9 PP  | 5         | 88,9                    | 3.1/2"          | 60        | 122        | 120       | 154       | 5          |
| SRS 7090 PP    | 5         | 90,0                    | -               | 60        | 122        | 120       | 154       | 5          |
| SRS 8090 PP    | 6         | 90,0                    | -               | 80        | 168        | 170       | 205       | 6          |
| SRS 8097 PP    | 6         | 97,0                    | -               | 80        | 168        | 170       | 205       | 6          |
| SRS 8100 PP    | 6         | 100,0                   | -               | 80        | 168        | 170       | 205       | 6          |
| SRS 8101.6 PP  | 6         | 101,6                   | 4"              | 80        | 168        | 170       | 205       | 6          |
| SRS 8108 PP    | 6         | 108,0                   | 4.1/4"          | 80        | 168        | 170       | 205       | 6          |
| SRS 8114.3 PP  | 6         | 114,3                   | 4.1/2"          | 80        | 168        | 170       | 205       | 6          |
| SRS 8127 PP    | 6         | 127,0                   | 5"              | 80        | 168        | 170       | 205       | 6          |
| SRS 9127 PP    | 7         | 127,0                   | 5"              | 90        | 205        | 200       | 250       | 6          |
| SRS 9133 PP    | 7         | 133,0                   | 5.1/4"          | 90        | 205        | 200       | 250       | 6          |
| SRS 9140 PP    | 7         | 140,0                   | 5.1/2"          | 90        | 205        | 200       | 250       | 6          |
| SRS 9150 PP    | 7         | 150,0                   | -               | 90        | 205        | 200       | 250       | 6          |
| SRS 9152.4 PP  | 7         | 152,4                   | 6"              | 90        | 205        | 200       | 250       | 6          |
| SRS 9159 PP    | 7         | 159,0                   | 6.1/4"          | 90        | 205        | 200       | 250       | 6          |
| SRS 9165.1 PP  | 7         | 165,1                   | 6.1/2"          | 90        | 205        | 200       | 250       | 6          |
| SRS 9168.3 PP  | 7         | 168,3                   | 6.5/8"          | 90        | 205        | 200       | 250       | 6          |
| SRS 10168.3 PP | 8         | 168,3                   | 6.5/8"          | 120       | 265        | 270       | 320       | 6          |
| SRS 10177.8 PP | 8         | 177,8                   | 7"              | 120       | 265        | 270       | 320       | 6          |
| SRS 10193.7 PP | 8         | 193,7                   | 7.5/8"          | 120       | 265        | 270       | 320       | 6          |
| SRS 10203 PP   | 8         | 203,0                   | -               | 120       | 265        | 270       | 320       | 6          |
| SRS 10219.1 PP | 8         | 219,1                   | 8.5/8"          | 120       | 265        | 270       | 320       | 6          |
| SRS 10220 PP   | 8         | 220,0                   | -               | 120       | 265        | 270       | 320       | 6          |

## Productvarianten

|                 |  |
|-----------------|--|
| SRS 30-100 AL   | Buisklem, zware serie, Binnenkant van de klem met ribben |
| SRS 30-100 PA   | Buisklem, zware serie, Binnenkant van de klem met ribben |
| SRS 30-100 PP G | Buisklem, zware serie, Binnenkant van de klem glad       |
| SRS 30-100 VG   | Buisklem, zware serie, Binnenkant van de klem met ribben |

## is extra element bij volgende producten

|     |                                     |
|-----|-------------------------------------|
| C D | Samenstelling van groep C dubbel    |
| C A | Samenstelling van groep C<br>opbouw |
| C   | Samenstelling van groep C           |