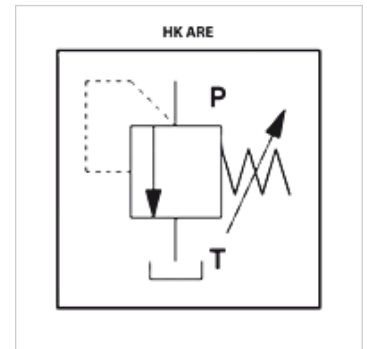


### Eigenschappen

|                   |   |
|-------------------|---|
| <b>Uitvoering</b> | direct gestuurd<br>uitvoering R met geringe interne lekkage |
| <b>Werkdruk</b>   | tot 500 bar   |



### Aanwijzing

Deze ventielen moeten worden ingesteld voor de betreffende toepassing.

### Artikel

| Aanduiding      | Drukinstellingsbereik bar | Q max.<br>(L/min) | A<br>(mm) | B<br>(mm) | Aansluiting P | Aansluiting T | Gewicht<br>(kg) |
|-----------------|---------------------------|-------------------|-----------|-----------|---------------|---------------|-----------------|
| HK ARE 06 100 R | 3 - 100                   | 40                | 140       | 62        | G 1/4"        | G 3/8"        | 1,0             |
| HK ARE 06 210 R | 10 - 210                  | 40                | 140       | 62        | G 1/4"        | G 3/8"        | 1,0             |
| HK ARE 06 350 R | 15 - 350                  | 40                | 140       | 62        | G 1/4"        | G 3/8"        | 1,0             |
| HK ARE 06 500 R | 30 - 500                  | 40                | 140       | 62        | G 1/4"        | G 3/8"        | 1,0             |
| HK ARE 15 15 R  | 2 - 15                    | 75                | 165       | 62        | G 1/2"        | G 1/2"        | 1,3             |
| HK ARE 15 75 R  | 4 - 75                    | 75                | 165       | 62        | G 1/2"        | G 1/2"        | 1,3             |
| HK ARE 15 150 R | 8 - 150                   | 75                | 165       | 62        | G 1/2"        | G 1/2"        | 1,3             |
| HK ARE 15 250 R | 8 - 250                   | 75                | 165       | 62        | G 1/2"        | G 1/2"        | 1,3             |