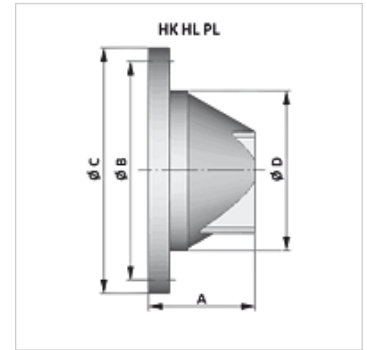
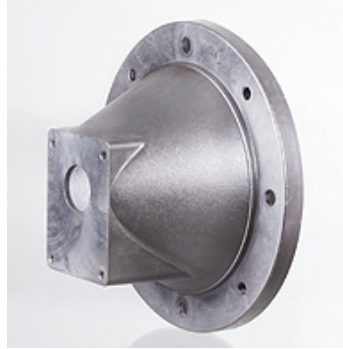


Eigenschappen

| | |
|-------------------|---|
| Uitvoering | te combineren met koppeling HK HE en HK ROTEX Z |
| Materiaal | aluminium |
| Gebruik | For gear pumps size 2 and size 3 |



Beschrijving

centrerings voor motor- en pompas

Artikel

| Aanduiding | A (mm) | Ø B (mm) | Ø C (mm) | Ø D (mm) | Flens pompaansluiting | Pomp | Motor | Gewicht (kg) |
|-----------------|-----------|-------------|-------------|-------------|-----------------------|---------------|-----------|-----------------|
| HK HL 1 | 70,00 | 130 | 160 | 110 | 2-gats-flens 66 | BG0 / as cil. | BG71 | 0,44 |
| HK HL 2 | 70,00 | 130 | 160 | 110 | 71,9 x 52,4 | BG1 / as 1:8 | BG71 | 0,44 |
| HK HL 4L | 86,00 | 165 | 200 | 130 | 2-gats-flens 66 | BG0 / as cil. | BG80/90 | 0,68 |
| HK HL 5L | 86,00 | 165 | 200 | 130 | 71,9 x 52,4 | BG1 / as 1:8 | BG80/90 | 0,67 |
| HK HL 7SL | 95,00 | 165 | 200 | 130 | 96,2 x 71,5 | BG2 / as 1:8 | BG80/90 | 0,65 |
| HK HL 81L | 115,00 | 215 | 250 | 176 | 71,9 x 52,4 | BG1 / as 1:8 | BG100/112 | 1,22 |
| HK HL 9L | 115,00 | 215 | 250 | 176 | 96,2 x 71,5 | BG2 / as 1:8 | BG100/112 | 1,21 |
| HK HL 11 | 130,00 | 215 | 250 | 176 | 128 x 98 | BG3 / as 1:8 | BG100/112 | 1,20 |
| HK HL 12 | 148,00 | 265 | 300 | 229 | 96,2 x 71,5 | BG2 / as 1:8 | BG132 | 1,99 |
| HK HL 13 | 148,00 | 265 | 300 | 229 | 128 x 98 | BG3 / as 1:8 | BG132 | 1,99 |
| HK HL 15 | 187,00 | 300 | 350 | 210 | 96,2 x 71,5 | BG2 / as 1:8 | BG160/180 | 3,38 |
| HK HL 16 | 187,00 | 300 | 350 | 210 | 128 x 98 | BG3 / as 1:8 | BG160/180 | 3,38 |
| HK PL 300 01 02 | 132,00 | 265 | 300 | 234 | 96,2 x 71,5 | BG2 / as 1:8 | BG132 | 1,99 |
| HK PK 300 02 08 | 137,00 | 265 | 300 | 234 | 128 x 98 | BG3 / as 1:8 | BG132 | 1,90 |
| HK PL 350 01 05 | 175,00 | 300 | 350 | 260 | 96,2 x 71,5 | BG2 / as 1:8 | BG160/180 | 3,38 |
| HK PL 350 01 06 | 175,00 | 300 | 350 | 260 | 128 x 98 | BG3 / as 1:8 | BG160/180 | 3,38 |

Toebehoren

| | |
|--------|---------------------------|
| HK DRV | Dempring |
| HK DPT | Afdichting voor pomprager |