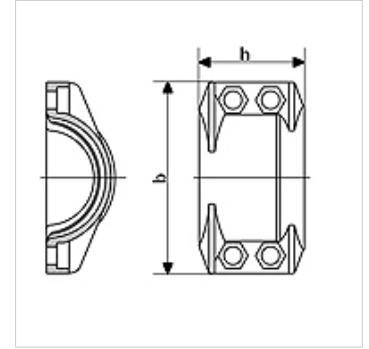


Eigenschappen

| | |
|--------------------------|--|
| Toepassingsgebied | Slangkoppeling voor klemringarmaturen |
| Norm | DIN 2817 |
| Constructie | Klemschalen |
| Leveromvang | Klemhelften los incl. bouten en moeren |
| Materiaal | aluminium gesmeed |



Artikel

| Aanduiding | voor slang | Spanbereik (mm) | DN* | Max. bedrijfsdruk (bar) | b (mm) | h (mm) | Bouten |
|----------------------|------------|-----------------|-----|-------------------------|--------|--------|-----------------|
| KS 22-24 AL | 13 x 5 | 22 - 24 | 19 | 25 | 51 | 50 | (4 x) M 6 x 20 |
| KS 30-33 AL | 19 x 6 | 30 - 33 | 20 | 25 | 63 | 50 | (4 x) M 6 x 20 |
| KS 34-36 AL | 25 x 5 | | 25 | 25 | 70 | 64 | (4 x) M 8 x 25 |
| KS 36-39 AL | 25 x 6 | 36 - 39 | 25 | 25 | 69 | 50 | (4 x) M 6 x 20 |
| KS 40-43 AL | 25 x 8 | 40 - 43 | 25 | 25 | 73 | 50 | (4 x) M 6 x 20 |
| KS 43-46 AL | 32 x 6 | 43 - 46 | 32 | 25 | 76 | 50 | (4 x) M 6 x 20 |
| KS 47-51 AL | 38 x 5 | 47 - 51 | 40 | 25 | 79 | 50 | (4 x) M 6 x 20 |
| KS 50-53 AL | 38 x 6,5 | 50 - 53 | 40 | 25 | 83 | 50 | (4 x) M 6 x 20 |
| KS 53-56 AL | 38 x 8 | 53 - 56 | 40 | 25 | 85 | 50 | (4 x) M 6 x 20 |
| KS 58-61 AL | 40 x 10 | | 40 | 25 | 98 | 57 | (4 x) M 8 x 25 |
| KS 60-64 AL | 50 x 5,5 | 60 - 64 | 51 | 25 | 95 | 56 | (4 x) M 8 x 25 |
| KS 63-67 AL | 50 x 8 | 63 - 67 | 51 | 25 | 102 | 56 | (4 x) M 8 x 25 |
| KS 74-77 AL | 63 x 6 | 74 - 77 | 63 | 25 | 120 | 74 | (4 x) M 10 x 40 |
| KS 78-82 AL | 63 x 8 | 78 - 82 | 63 | 25 | 120 | 74 | (4 x) M 8 x 25 |
| KS 85-89 AL | 75 x 6 | | 76 | 25 | 141 | 102 | (4 x) M 10 x 40 |
| KS 89-93 AL | 75 x 8 | 89 - 93 | 76 | 25 | 132 | 76 | (4 x) M 8 x 25 |
| KS 94-97 AL | 75 x 10 | 94 - 97 | 76 | 25 | 140 | 76 | (4 x) M 8 x 25 |
| KS 111-115 AL | 100 x 6,5 | 111 - 115 | 100 | 25 | - | 120 | - |
| KS 114-119 AL | 100 x 8 | 114 - 119 | 100 | 25 | 166 | 120 | (4 x) M 10 x 40 |
| KS 118-122 AL | 100 x 10 | 118 - 122 | 100 | 25 | 170 | 120 | (4 x) M 10 x 40 |

DN = nominale diameter, nominale wijde