

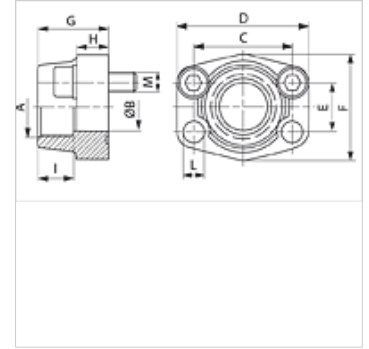
# AFS N (6000 PSI)

SAE-inschroefflens, NPT

**HANSA FLEX**

## Eigenschappen

|                             |                         |
|-----------------------------|-------------------------|
| <b>Drukserie</b>            | 6000 psi                |
| <b>Norm</b>                 | SAE J 518 C<br>ISO 6162 |
| <b>Uitvoering</b>           | recht                   |
| <b>Constructie</b>          | SAE-inschroefflens      |
| <b>Bevestiging</b>          | Boutenboring            |
| <b>Leveromvang</b>          | Alleen flens            |
| <b>Materiaal</b>            | S355J2G3 (ST52.3)       |
| <b>Oppervlakbescherming</b> | Zwart geolied           |



## Aanwijzing

De genoemde maximale werkdruk geldt voor de flens! De werkelijke werkdruk wordt bepaald door de wanddikte en de kwaliteit van de buis!

Aanbevolen schroeven zijn in de kolommen M (metr) of M (unc) vermeld.

## Artikel

| Aanduiding             | PB 10.9<br>(bar) | Maat   | A                | Ø B<br>(mm) | C<br>(mm) | D<br>(mm) | E<br>(mm) | F<br>(mm) | G<br>(mm) | H<br>(mm) | I<br>(mm) | L<br>(mm) | M metr.   | M unc          |
|------------------------|------------------|--------|------------------|-------------|-----------|-----------|-----------|-----------|-----------|-----------|-----------|-----------|-----------|----------------|
| <b>AFS 401 N</b>       | 400              | 1/2"   | NPT 1/2" -14     | 13          | 40,5      | 54        | 18,2      | 46        | 36        | 16        | 19        | 9,0       | M 8 x 30  | 5/16" x 1.1/4" |
| <b>AFS 401 N 3/8</b>   | 400              | 1/2"   | NPT 3/8" -18     | 13          | 40,5      | 54        | 18,2      | 46        | 36        | 16        | 19        | 9,0       | M 8 x 30  | 5/16" x 1.1/4" |
| <b>AFS 402 N</b>       | 400              | 3/4"   | NPT 3/4" -14     | 19          | 50,8      | 71        | 23,8      | 55        | 35        | 21        | 22        | 11,0      | M 10 x 35 | 3/8" x 1.1/2"  |
| <b>AFS 402 N 1/2</b>   | 400              | 3/4"   | NPT 1/2" -14     | 13          | 50,8      | 71        | 23,8      | 55        | 35        | 21        | 22        | 11,0      | M 10 x 35 | 3/8" x 1.1/2"  |
| <b>AFS 403 N</b>       | 400              | 1"     | NPT 1" -11,5     | 25          | 57,2      | 81        | 27,8      | 65        | 42        | 25        | 24        | 13,0      | M 12 x 45 | 7/16" x 1.3/4" |
| <b>AFS 403 N 3/4</b>   | 400              | 1"     | NPT 3/4" -14     | 19          | 57,2      | 81        | 27,8      | 65        | 42        | 25        | 24        | 13,0      | M 12 x 45 | 7/16" x 1.3/4" |
| <b>AFS 404 N</b>       | 400              | 1.1/4" | NPT 1,1/4" -11,5 | 32          | 66,7      | 95        | 31,8      | 78        | 45        | 27        | 25        | *1        | M 14 x 45 | 1/2" x 1.3/4"  |
| <b>AFS 404 N 1</b>     | 400              | 1.1/4" | NPT 1" -11,5     | 25          | 66,7      | 95        | 31,8      | 78        | 45        | 27        | 25        | *1        | M 14 x 45 | 1/2" x 1.3/4"  |
| <b>AFS 405 N</b>       | 400              | 1.1/2" | NPT 1.1/2"       | 38          | 79,4      | 112       | 36,5      | 94        | 50        | 30        | 28        | 17,0      | M 16 x 50 | 5/8" x 2"      |
| <b>AFS 405 N 1 1/4</b> | 400              | 1.1/2" | NPT 1,1/4" -11,5 | 32          | 79,4      | 112       | 36,5      | 94        | 50        | 30        | 28        | 17,0      | M 16 x 50 | 5/8" x 2"      |
| <b>AFS 406 N</b>       | 400              | 2"     | NPT 2" -11,5     | 51          | 96,8      | 134       | 44,5      | 114       | 65        | 37        | 30        | 21,0      | M 20 x 65 | 3/4" x 2.1/2"  |
| <b>AFS 406 N 1 1/2</b> | 400              | 2"     | NPT 1.1/2"       | 38          | 96,8      | 134       | 44,5      | 114       | 65        | 37        | 30        | 21,0      | M 20 x 65 | 3/4" x 2.1/2"  |

PN = nominale druk PB = max. werkdruk

\*1) = 15,0 bij metrische bouten; 13,5 bij UNC-bouten

## Productvarianten

**AFS N M (3000 / 6000 PSI)** SAE-inschroefflens, NPT, Met metrische boutenset en O-ring

**AFS N U (3000 / 6000 PSI)** SAE-inschroefflens, NPT, Met UNC boutenset en O-ring