

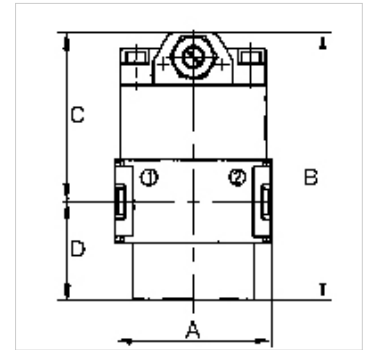
K-ANFAV MULTIFIX MINI

Start-up valves

HANSA FLEX

Eigenschappen

| | |
|----------------------|--|
| Ingangsdruk | Min. 2.5 bar, max. 16 bar |
| Mediumtemperatuur | max. 60 °C |
| Omgevingstemperatuur | Max. 60 °C |
| Debiet | 1600 l/min |
| Afdichtmateriaal | NBR |
| Behuizing | Die-cast zinc |
| Debietwaardemeting | At P1 = 6 bar and pressure drop $\Delta p = 1$ bar |



Aanwijzing

If several devices in the »multifix-mini« Series are assembled together, the maximum working pressure is 12 bar.

Andere gegevens op aanvraag.

Beschrijving

Seat valves operated by secondary pressure for controlled pressurisation of pneumatic systems. The full cross-section of the regulator is opened at 50% of the input pressure. With adjustable restrictor!

Artikel

| Aanduiding | Schroefdraad | A (mm) | B | C (mm) | D (mm) |
|----------------|--------------|-----------|---------|-----------|-----------|
| K- 07 25 11 53 | G 1/4 | 45,0 | 77,5 mm | 48,5 | 29,0 |

Toebehoren

K-HALTERBAUSATZ Holder

Reserveonderdelen

K-KOPPELPAKET MEHR Coupling packet