

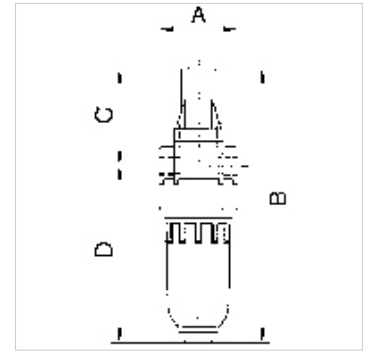
K-NEBELOE METALLBEHAELT STANDARD-MI

Oil-mist lubricators with metal bowl and metal sight dome

HANSA FLEX

Eigenschappen

Ingangsdruk	Max. 16 bar (polycarbonate bowl), Max. 25 bar (metal bowl)
Mediumtemperatuur	max. 60 °C
Omgevingstemperatuur	Max. 60 °C
Debiet	650 l/min
Afdichtmateriaal	NBR
Behuizing	Die-cast zinc, painted silver
Druppelopzet	PA (polycarbonate bowl), Zinc-glass-NBR (metal bowl)
Oliesoort	CL 32 acc. to DIN 51517 - ISO VG 32
Debietwaardemeting	At P1 = 6 bar and pressure drop $\Delta p = 1$ bar
Overige gegevens	User manual on request



Beschrijving

Proportional lubricators in compact design, oil can be filled under pressure.

Artikel

Aanduiding	Schroefdraad	A (mm)	B	C (mm)	D (mm)	DN
K- 07 25 08 84	G 1/8	40,0	141,0 mm	49,0	92,0	5
K- 07 25 08 86	G 1/4	40,0	141,0 mm	49,0	92,0	5

Reserveonderdelen

K-ERSATZBEHAELTER MULTI MINI	Spare tank »multifix-mini« & »standard-mini«
K-TROPFAUFSATZ POLYCARBO	Drip attachment polycarbonate
K-TROPFAUFSATZ METALL	Drip attachment metal
K-LOESBARE DOPPELNIPPEL MS	Double nipples
K-XV AGM MS NI	Double nipples, parallel male thread, nickel-plated brass