

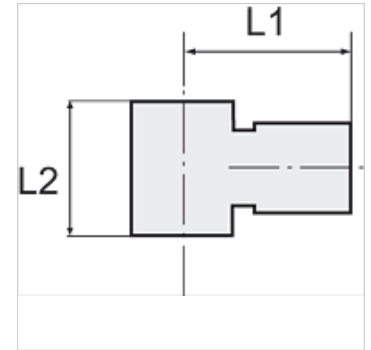
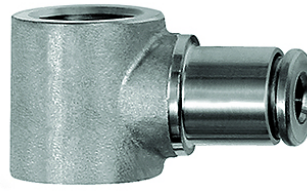
# K-L-RINGSTUECK

Ring nipples, single

**HANSA FLEX**

## Eigenschappen

Werkdruk pulserend	Max. 10 bar
Druk	Max. 15 bar (depending on pipe quality)
geschikt buismateriaal	PVDF, PTFE, stainless steel, PA, PU
Norm	G thread acc. to DIN EN ISO 228-1
Omgevingstemperatuur	-20 °C to max. +150 °C (depending on pipe quality and diameter)
Materiaal	RVS 1.4404
Afdichtmateriaal	FKM



## Aanwijzing

Andere gegevens op aanvraag.

## Beschrijving

For use with aggressive media and in areas with corrosive outside influences, in the food processing industry and in hygienic and sanitary applications.

## Artikel

Aanduiding	Schroefdraad	voor uitw. slang-Ø	L1 (mm)	L2 (mm)
K- 07 40 47 10	G 1/8	4 mm	19,5	15,0
K- 07 40 47 11	G 1/8	6 mm	22,0	15,0
K- 07 40 47 12	G 1/8	8 mm	22,5	15,0
K- 07 40 47 08	G 1/4	6 mm	23,5	17,0
K- 07 40 47 09	G 1/4	8 mm	24,0	17,0
K- 07 40 47 07	G 1/4	10 mm	27,0	17,0
K- 07 40 47 13	G 3/8	10 mm	29,0	20,0
K- 07 40 47 14	G 3/8	12 mm	31,0	20,0
K- 07 40 47 06	G 1/2	12 mm	33,0	24,0