

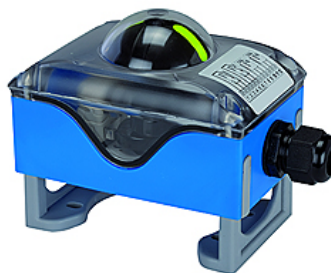
K-ENDLAGEN-RUECKME KUNST M

End position feedback - plastic microswitch

HANSA FLEX

Eigenschappen

Kabelschroefverbinding	M 20 x 1.5
min. schakelvermogen	1 mA at 4 V DC
Nominale schakelvermogen	1 mA to 5 A at 250 V AC
Schakelfunctie	Changeover, silver-plated contacts
Beschermingsklasse	IP 67, acc. to DIN EN 60529
Temperatuurgebied	-20 °C to +70 °C
Behuizing	Polyamide blue or black
Schroef	Stainless steel 1.4301
As	Polyamide PA6, black
Deksel	Polycarbonate, transparent
Montagebrug	PA6 with 30 % glass fibre
Afdichtingen	EPDM and NBR
Afdichtmateriaal	NBR



Aanwijzing

Andere gegevens op aanvraag.

Beschrijving

Robust type in a plastic housing, Universal indicator for NAMUR sizes 80 x 30 and 130 x 30, Height-adjustable feet that adapt to different pinion projections, ON / OFF position indicator also visible from a distance, Easy-to-adjust, self-locking trip cam

Artikel

Aanduiding	Definitie
K- 07 30 29 05	End position feedback, M 2 type with microswitch