

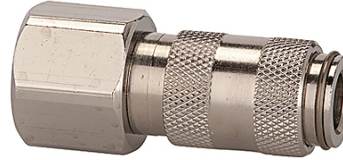
# K-SVKM NW 2,7 IG VA

Quick disconnect couplings DN 2.7, stainless steel 1.4404, female

**HANSA FLEX**

## Eigenschappen

|                              |   |
|------------------------------|---|
| Werkdruk                     | 0 - 35 bar, maximum static working pressure (non-pulsating) |
| Debiet lucht                 | 165 l/min (at 6 bar and $\Delta p = 0.5$ bar)               |
| Mediumtemperatuur            | -15 °C to +200 °C   |
| Behuizing, huls, ventielhuis | Stainless steel 1.4404                                      |
| Veer, snapring, kogels       | Stainless steel 1.4404                                      |
| Afdichtmateriaal             | FKM   |



## Aanwijzing

Andere gegevens op aanvraag.

## Beschrijving

One-hand quick disconnect couplings, one side sealing, extremely compact with a large bore and only a small pressure drop. Ideal for: Medical equipment, chemical and pharmaceutical industry, laboratories, plant construction and butchers.

## Artikel

| Aanduiding     | Aansluiting  | Lengte (mm) | SW (mm) |
|----------------|--------------|-------------|---------|
| K- 07 35 12 47 | M 5 female   | 25,0        | 9       |
| K- 07 35 12 48 | G 1/8 female | 28,0        | 12      |