

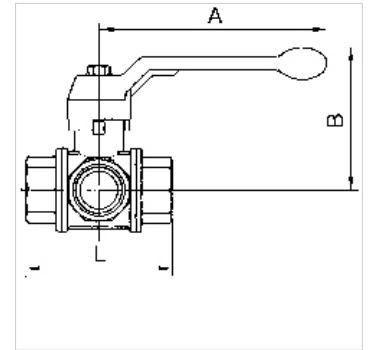
# K-3 BKR T VA LEICHT

3-way ball valves, T-bore, lightweight type

**HANSA FLEX**

## Eigenschappen

|                           |                           |
|---------------------------|---------------------------|
| Schroefdraad beschrijving | Rp thread acc. to ISO 7-1 |
| Mediumtemperatuur         | -15 °C to max. +100 °C    |
| Afdichtmateriaal          | PTFE                      |
| Veer                      | Stainless-steel           |
| Behuizing en kogel        | Nickel-plated brass       |
| Handhendel                | Aluminium, painted black  |



## Aanwijzing

Andere gegevens op aanvraag.

## Beschrijving

Sealing on all sides with T-bore. In contrast to the 1084 series, the lever of this model can only be turned 90° rather than 180°. Only two valve positions are therefore possible instead of four.

## Artikel

| Aanduiding     | DN | Schroefdraad | A<br>(mm) | B<br>(mm) | Boorgat kogel | L<br>(mm) | max. bedrijfsdruk bij 20°C<br>(bar) |
|----------------|----|--------------|-----------|-----------|---------------|-----------|-------------------------------------|
| K- 07 30 19 68 | 15 | Rp 1/2       | 130,0     | 85,0      | 13            | 80,0      | 40                                  |
| K- 07 30 19 69 | 20 | Rp 3/4       | 160,0     | 98,0      | 18            | 96,0      | 40                                  |
| K- 07 30 19 70 | 25 | Rp 1         | 160,0     | 102,0     | 23            | 113,0     | 25                                  |
| K- 07 30 19 71 | 32 | Rp 1 1/4     | 195,0     | 121,0     | 29            | 130,0     | 16                                  |
| K- 07 30 19 72 | 40 | Rp 1 1/2     | 195,0     | 125,0     | 35            | 147,0     | 16                                  |
| K- 07 30 19 73 | 50 | Rp 2         | 235,0     | 141,0     | 44            | 169,0     | 16                                  |