

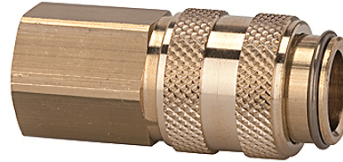
# K-SVKM NW 5 ABSP IG MS

Quick disconnect couplings DN 5, both sides sealing, brass, female

**HANSA FLEX**

## Eigenschappen

Werkdruk	0 - 35 bar, maximum static working pressure (non-pulsating)
Debiet lucht	310 l/min (at 6 bar and $\Delta p = 0.5$ bar)
Mediumtemperatuur	-20 °C to +100 °C
Behuizing, huls, ventielhuis	Brass
Veer, snapring, kogels	stain less steel
Afdichtmateriaal	NBR



## Aanwijzing

Andere gegevens op aanvraag.

## Beschrijving

Both the coupling and the self-sealing plug are fitted with a valve. Connection: Both valves open and the medium is allowed to pass. Disconnection: Both valves close and the medium is prevented from escaping.

## Artikel

Aanduiding	Aansluiting	Lengte (mm)	SW (mm)
K- 07 35 06 75	G 1/8 female	38,0	14
K- 07 35 06 76	G 1/4 female	38,0	17