

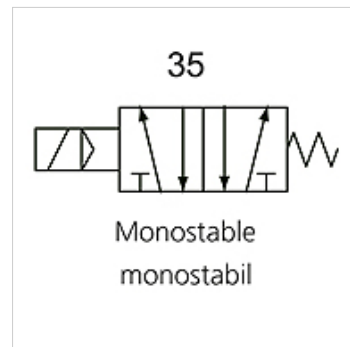
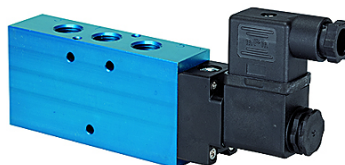
K-WV 5/2 EINS ELEKTRO

5/2-way spool valves, single solenoid

HANSA FLEX

Eigenschappen

Functie	5/2-way
Werkdruk	2.5 - 10 bar; Max. vacuum 10 bar (external pilot air)
min. werkdruk	2,5 bar
Temperatuurgebied	-10 °C to +60 °C
Debiet 6bar en 10bar	1500 NI/min (G 1/4), 4600 NI/min (G 1/2)
Elektrische aansluiting	Coupler plug PG 9 - form B
Beschermingsklasse	IP 65 (DIN 46244)
Behuizing	Anodised aluminium, blue
Zuigerschuif	Stainless steel
Afdichtmateriaal	NBR



Aanwijzing

Andere gegevens op aanvraag.

Beschrijving

This valve design, featuring the Tapered Tee Seal®, offers the ability to run without lubrication and supports almost any compressed air quality. The valves are largely resistant to dirt and can thus also be used under extreme conditions without any problems. Leakage is now a thing of the past and the spool no longer sticks, even after long idle periods.

Artikel

Aanduiding	Aansluiting	Spanning	DN	Schakelschema nummer	Besturing
K- 07 15 02 21	G 1/4	24 V DC	8	35	
K- 07 15 02 22	G 1/2"	24 V DC	15	35	
K- 07 15 02 23	G 1/4	230 V AC, 50 Hz	8	35	
K- 07 15 02 24	G 1/2"	230 V AC, 50 Hz	15	35	