

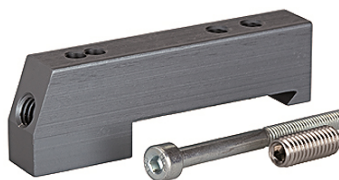
# K-ADA HUTPROFIL

Adapter for DIN rail

**HANSA FLEX**

## Eigenschappen

<b>Middelen</b>	Filtered, unlubricated or lubricated compressed air. If lubrication is used, it must be continuous.
<b>Werkdruk</b>	Max. vacuum 10 bar (external pilots), 3 to 7 bar (internal pilots as standard)
<b>Regeldruk</b>	3 - 7 bar
<b>Temperatuurgebied</b>	-10 °C to +60 °C
<b>Debiet</b>	200 NI/min (Ø 4), 500 NI/min (Ø 6), 800 NI/min (Ø 8)
<b>Aantal aansturingen</b>	Max. 16 (e.g. 16 spring return valves)
<b>Handmatige hulpbediening</b>	Latching (bistable), Monostable (non-latching) version also available on request
<b>Opgenomen vermogen</b>	0.6 W per pilot
<b>Beschermingsklasse</b>	IP 65



## Aanwijzing

Andere gegevens op aanvraag.

## Beschrijving

These compact valve terminals, with a maximum flow rate of 800 NI/min, can be individually adapted to the specific conditions of each application thanks to the wide range of functions and various input and intermediate plates. Since each valve terminal is a customer-specific combination of a series of individual elements, the catalogue only lists the available input, intermediate and end plates as well as the different valve discs and the 25-pin multi-pole connectors.

## Extra informatie

Important: The scope of supply does not include a connector. Please order separately.

## Artikel

Aanduiding	Definitie
K- 07 15 22 43	Adapter for DIN rail