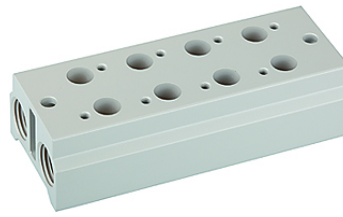


# K-MEHRFACH GRUNDPLATTE 3/2 WV

Multiple manifold bases

**HANSA FLEX**



## Aanwijzing

Andere gegevens op aanvraag.

## Beschrijving

Aluminium alloy manifold bases 6061-T6 for 2 to 8 valve positions.

## Artikel

Aanduiding	Definitie	voor ventieelaansluiting
K- 07 15 06 41	Manifold base for 2 valve positions	M 5, G 1/8
K- 07 15 06 44	Manifold base for 3 valve positions	M 5, G 1/8
K- 07 15 06 47	Manifold base for 4 valve positions	M 5, G 1/8
K- 07 15 06 50	Manifold base for 5 valve positions	M 5, G 1/8
K- 07 15 06 53	Manifold base for 6 valve positions	M 5, G 1/8
K- 07 15 06 56	Manifold base for 7 valve positions	M 5, G 1/8
K- 07 15 06 59	Manifold base for 8 valve positions	M 5, G 1/8
K- 07 15 06 62	Cover plate for ground plate	M 5, G 1/8
K- 07 15 06 40	Manifold base for 2 valve positions	G 1/8, G 1/4
K- 07 15 06 43	Manifold base for 3 valve positions	G 1/8, G 1/4
K- 07 15 06 46	Manifold base for 4 valve positions	G 1/8, G 1/4
K- 07 15 06 49	Manifold base for 5 valve positions	G 1/8, G 1/4
K- 07 15 06 52	Manifold base for 6 valve positions	G 1/8, G 1/4
K- 07 15 06 55	Manifold base for 7 valve positions	G 1/8, G 1/4
K- 07 15 06 58	Manifold base for 8 valve positions	G 1/8, G 1/4
K- 07 15 06 61	Cover plate for ground plate	G 1/8, G 1/4
K- 07 15 06 42	Manifold base for 2 valve positions	G 1/4, G 3/8
K- 07 15 06 45	Manifold base for 3 valve positions	G 1/4, G 3/8
K- 07 15 06 48	Manifold base for 4 valve positions	G 1/4, G 3/8
K- 07 15 06 51	Manifold base for 5 valve positions	G 1/4, G 3/8
K- 07 15 06 54	Manifold base for 6 valve positions	G 1/4, G 3/8
K- 07 15 06 57	Manifold base for 7 valve positions	G 1/4, G 3/8
K- 07 15 06 60	Manifold base for 8 valve positions	G 1/4, G 3/8
K- 07 15 06 63	Cover plate for ground plate	G 1/4, G 3/8