

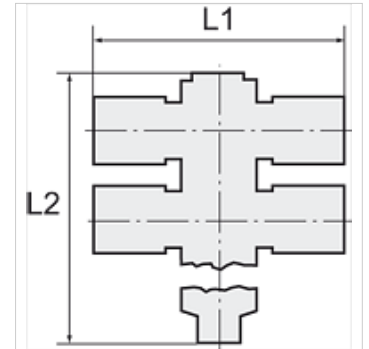
K-T-MEHRF-VERT 4 DREH 1

Tee distributors with inner hex, 4 outlets, swivel type, conical male thread, coated

HANSA FLEX

Eigenschappen

| | |
|--------------------|--|
| Werkdruk | Max. 15 bar, coarse vacuum |
| Toepassingsgebied | Air, vacuum |
| aanbevolen slangen | PU or PA (nylon) |
| Middelen | Compressed air and all gases or liquids that are compatible with the materials |
| Temperatuurgebied | -20 °C to +80 °C |
| Dichtvlak | Conical version: thread coating |
| Materiaal | Plastic, Nickel plated brass |
| Aandrukring | Plastic |



Aanwijzing

Andere gegevens op aanvraag.

Beschrijving

Push-in fittings series manufactured in plastic and nickel-plated brass. All parts are suitable for use with hoses, tubes or pipes made of plastic and copper.

Artikel

| Aanduiding | Schroefdraad | voor uitw. slang-Ø | Binnenzekant (mm) | L1 (mm) | L2 (mm) | SW |
|----------------|--------------|--------------------|-------------------|---------|---------|-------|
| K- 07 40 06 34 | R 1/8 | 4 mm | 4,0 | 45,0 | 44,3 | 14 mm |
| K- 07 40 06 36 | R 1/8 | 6 mm | 4,0 | 42,6 | 44,3 | 14 mm |
| K- 07 40 06 38 | R 1/8 | 8 mm | 4,0 | 48,5 | 44,3 | 14 mm |
| K- 07 40 06 30 | R 1/4 | 6 mm | 6,0 | 46,7 | 59,5 | 17 mm |
| K- 07 40 06 32 | R 1/4 | 8 mm | 6,0 | 52,5 | 59,5 | 17 mm |
| K- 07 40 06 27 | R 1/4 | 10 mm | 6,0 | 59,6 | 59,5 | 17 mm |
| K- 07 40 06 28 | R 1/4 | 12 mm | 6,0 | 61,2 | 59,5 | 17 mm |
| K- 07 40 06 42 | R 3/8 | 8 mm | 8,0 | 56,7 | 61,2 | 20 mm |
| K- 07 40 06 39 | R 3/8 | 10 mm | 8,0 | 63,5 | 61,2 | 20 mm |
| K- 07 40 06 40 | R 3/8 | 12 mm | 8,0 | 64,9 | 61,2 | 20 mm |