

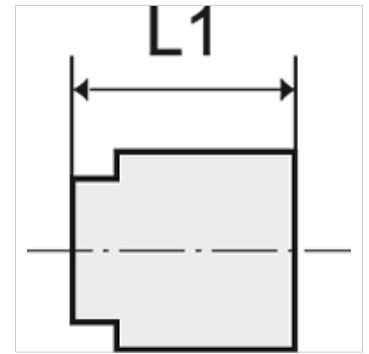
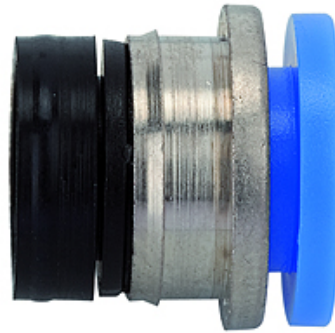
# K-EINPRESSPATRONE

Press-in sleeves - can only be pressed into plastic

**HANSA FLEX**

## Eigenschappen

Werkdruk	Max. 15 bar, coarse vacuum
Toepassingsgebied	Air, vacuum
aanbevolen slangen	PU or PA (nylon)
Middelen	Compressed air and all gases or liquids that are compatible with the materials
Temperatuurgebied	-20 °C to +80 °C
Dichtvlak	Parallel version: O-ring in housing, Conical version: thread coating
Materiaal	Plastic, Nickel plated brass
Aandrukking	Plastic



## Aanwijzing

Only in plastic press-fitted  
Andere gegevens op aanvraag.

## Beschrijving

Push-in fittings series manufactured in plastic and nickel-plated brass. All parts are suitable for use with hoses, tubes or pipes made of plastic and copper.

## Artikel

Aanduiding	voor uitw. slang-Ø	L1 (mm)
K- 07 40 09 95	4 mm	11,3
K- 07 40 09 96	6 mm	11,9
K- 07 40 09 97	8 mm	13,7
K- 07 40 09 98	10 mm	15,2
K- 07 40 09 99	12 mm	17,6