

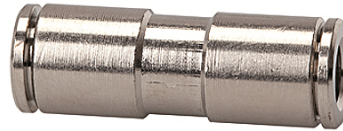
K-STECKVERBINDU 2

Straight push-in connector

HANSA FLEX

Eigenschappen

Werkdruk	Max. 16 bar
Bedrijfstemperatuur	-20 °C to +150 °C
Materiaal	messing vernikkeld
Aandrukkring	Nickel-plated brass
Spanring	Stainless steel



Aanwijzing

Andere gegevens op aanvraag.

Beschrijving

Push-in fittings, manufactured entirely in nickel-plated brass. All parts with a parallel thread are supplied with an FPM O-ring. All parts with conical threads are coated with preCOTE 5 dispersion, all fittings in this series can thus also be used at high temperatures (medium compressed air).

Artikel

Aanduiding	voor uitw. slang-Ø	L1 (mm)
K- 07 40 27 49	4 mm	31,0
K- 07 40 27 50	6 mm	33,0
K- 07 40 27 51	8 mm	37,0
K- 07 40 27 52	10 mm	39,0
K- 07 40 47 74	12 mm	43,0
K- 07 40 40 91	14 mm	47,5