

K-STROEV AG UNTEN

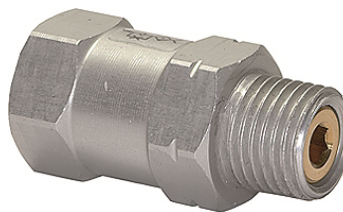
Check valves, male thread at bottom

HANSA FLEX

Właściwości

Typ konstrukcji Ball seat valve (ball in brass seat)

Obudowa Aluminium



Wskazówka

Dalsze informacje na zapytanie.

Opis

Check valves close the vacuum line if the suction pad is not covered, thus maintaining the vacuum. The valves are protected against dirt by a replaceable sieve. This valve series is suitable for all suction pads in our standard range.

Artykuł

Oznaczenie	Gwint 1	Gwint 2	Długość (mm)
K- 07 45 01 55	G 1/8 female	G 1/8 male	26,0
K- 07 45 01 54	G 1/4 female	G 1/4 male	26,0
K- 07 45 01 53	G 1/2 female	G 1/2 male	29,0