

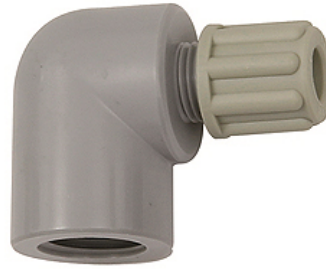
# K-W90 GAM IG

Female elbows with female G thread

**HANSA FLEX**

## Właściwości

<b>Ciśnienie robocze</b>	Dependent on operating temperature; Max. 10 bar (at 20 °C); Max. 1 bar (at 60 °C)
<b>korpus dwuzłączki</b>	Polyamide (PA)
<b>pierścień zaciskowy</b>	Polypropylene (PP)
<b>nakrętka</b>	Polypropylene (PP)



## Wskazówka

Dalsze informacje na zapytanie.

## Opis

Manufactured from high impact-resistant, UV-stabilised engineering plastic, extremely resistant to weathering. Good chemical resistance to benzene, diesel oil, fuel oil and alkalis. <br>Not suitable for use with acids.

## Artykuł

Oznaczenie	Gwint	dla węża	L1 (mm)	L2 (mm)
K- 07 40 32 98	G 1/8	4 mm / 6 mm	26,0	17,0
K- 07 40 32 99	G 1/8	6 mm / 8 mm	29,0	17,0
K- 07 40 33 00	G 1/4	4 mm / 6 mm	29,0	20,0
K- 07 40 33 01	G 1/4	6 mm / 8 mm	32,0	20,0
K- 07 40 33 02	G 1/4	8 mm / 10 mm	35,0	20,0