

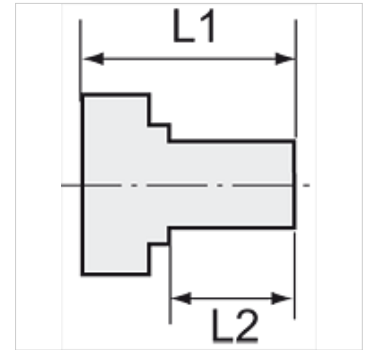
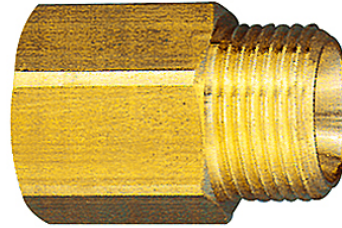
# K-RD NIPPEL LANG 1

Reducing nipples, long type

**HANSA FLEX**

## Właściwości

Ciśnienie pracy	10 bar
Temperatura czynnika	max. +90 °C
temperatura otoczenia	Max. +90 °C
Materiał	Brass with a bare metal surface



## Wskazówka

The dimensions of the standard screw fittings may change slightly during the life of the catalogue as a result of optimisation processes.  
Dalsze informacje na zapytanie.

## Dodatkowe informacje

Further types and dimensions on request.

## Artykuł

Oznaczenie	Gwint zewnętrzny	Gwint wewnętrzny	L1 (mm)	L2 (mm)	RK
K- 07 40 00 65	M 5	M 5	15,0	5,0	8 mm
K- 07 40 00 66	M 5	G 1/8	17,0	5,0	14 mm
K- 07 40 00 67	G 1/8	M 5	17,0	7,0	14 mm
K- 07 40 00 64	G 1/8	G 1/4	26,0	10,0	17 mm
K- 07 40 00 70	G 1/4	G 1/8	28,0	10,0	17 mm
K- 07 40 00 71	G 1/4	G 1/4	28,0	10,0	17 mm
K- 07 40 00 68	G 1/4	G 3/8	26,0	10,0	19 mm
K- 07 40 00 72	G 3/8	G 1/4	29,0	10,0	19 mm
K- 07 40 00 73	G 3/8	G 3/8	29,0	10,0	19 mm
K- 07 40 00 69	G 3/8	G 1/2	27,0	12,0	24 mm
K- 07 40 00 74	G 1/2	G 3/8	34,0	12,0	24 mm
K- 07 40 00 75	G 1/2	G 1/2	34,0	12,0	24 mm
K- 07 40 00 76	G 1/2	G 3/4	38,0	13,0	32 mm
K- 07 40 00 77	G 3/4	G 1	26,0	11,0	36 mm