

K-TR AG OR MS NI

Male hose fittings, parallel, with O-ring - nickel-plated brass

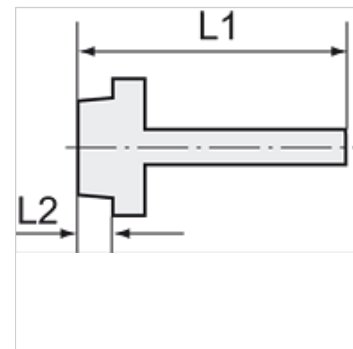
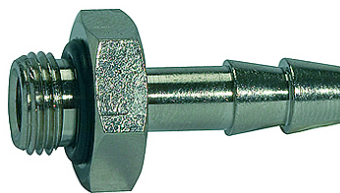
HANSA FLEX

Właściwości

Temperatura robocza Max. 80 °C (with O-ring, NBR)

Ciśnienie Max. 60 bar

Materiał mosiądz niklowany



Wskazówka

The dimensions of the standard screw fittings may change slightly during the life of the catalogue as a result of optimisation processes. Dalsze informacje na zapytanie.

Opis

Suitable for air, water, oil, steam, etc.

Dodatkowe informacje

Further types and dimensions on request.

Artykuł

Oznaczenie	Gwint	dla węża	L1 (mm)	L2 (mm)	RK
K- 07 40 13 59	G 1/8	LW 6 mm	30,0	6,5	14 mm
K- 07 40 13 60	G 1/8	LW 8 mm	31,0	6,0	15 mm
K- 07 40 13 61	G 1/8	LW 9 mm	31,0	6,0	15 mm
K- 07 40 13 62	G 1/4	LW 6 mm	32,0	8,0	17 mm
K- 07 40 13 63	G 1/4	LW 9 mm	33,0	8,0	18 mm
K- 07 40 13 64	G 1/4	LW 12 mm	33,0	8,0	18 mm
K- 07 40 49 89	G 1/4	LW 8 mm	32,0	8,0	17 mm
K- 07 40 49 90	G 1/4	LW 10 mm	33,0	8,0	17 mm
K- 07 40 49 96	G 1/4	LW 13 mm	33,0	8,0	18 mm
K- 07 40 49 97	G 3/8	LW 6 mm	33,0	9,0	20 mm
K- 07 40 49 98	G 3/8	LW 8 mm	33,0	9,0	20 mm
K- 07 40 13 65	G 3/8	LW 9 mm	34,0	9,0	21 mm
K- 07 40 49 91	G 3/8	LW 10 mm	34,0	9,0	20 mm
K- 07 40 13 66	G 3/8	LW 12 mm	34,0	9,0	21 mm
K- 07 40 49 92	G 3/8	LW 13 mm	34,0	9,0	21 mm
K- 07 40 13 67	G 1/2	LW 12 mm	36,0	11,0	26 mm
K- 07 40 49 93	G 1/2	LW 13 mm	36,0	10,0	24 mm
K- 07 40 49 94	G 1/2	LW 16 mm	40,0	10,0	25 mm
K- 07 40 49 95	G 1/2	LW 19 mm	40,0	10,0	24 mm