

# K-RD NIPPEL LANG ES

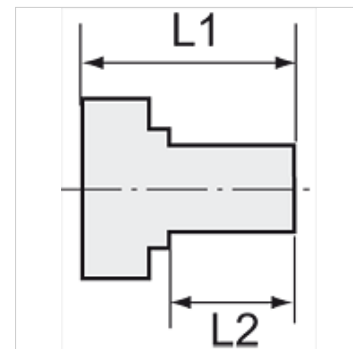
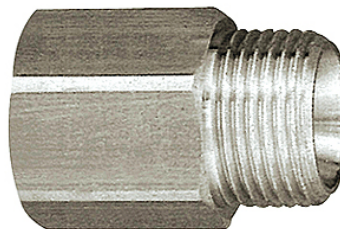
Reducing nipples, long type

**HANSA FLEX**

## Właściwości

Ciśnienie pracy Max. 20 bar

Materiał stal szlachetna 1.4571



## Wskazówka

The dimensions of the standard screw fittings may change slightly during the life of the catalogue as a result of optimisation processes.

Dalsze informacje na zapytanie.

## Dodatkowe informacje

Further types and dimensions on request.

## Artykuł

Oznaczenie	Gwint zewnętrzny	Gwint wewnętrzny	L1 (mm)	L2 (mm)	RK
K- 07 40 15 38	M 5	M 5	16,0	5,5	10 mm
K- 07 40 15 39	M 5	G 1/8	17,0	5,0	14 mm
K- 07 40 15 43	G 1/8	G 1/8	23,0	8,0	14 mm
K- 07 40 15 40	G 1/8	G 1/4	26,0	10,0	17 mm
K- 07 40 15 44	G 1/4	G 1/8	28,0	10,0	17 mm
K- 07 40 15 45	G 1/4	G 1/4	28,0	10,0	17 mm
K- 07 40 15 41	G 1/4	G 3/8	26,0	10,0	19 mm
K- 07 40 15 46	G 3/8	G 1/4	29,0	10,0	19 mm
K- 07 40 15 47	G 3/8	G 3/8	29,0	10,0	19 mm
K- 07 40 15 42	G 3/8	G 1/2	27,0	12,0	24 mm
K- 07 40 15 48	G 1/2	G 3/8	34,0	12,0	24 mm
K- 07 40 15 49	G 1/2	G 1/2	34,0	12,0	24 mm
K- 07 40 15 50	G 1/2	G 3/4	38,0	13,0	32 mm