

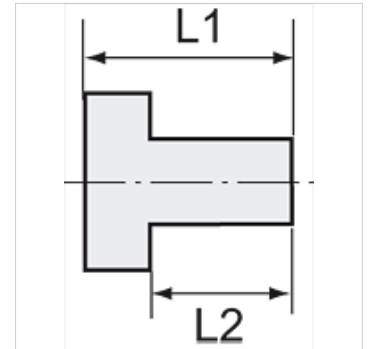
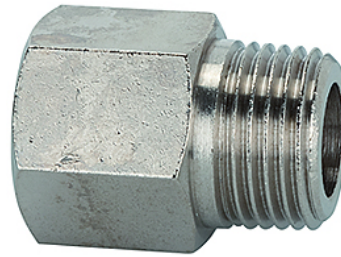
# K-VLST K AG-K IG MS NI

Extensions, short, conical male thread, parallel female thread - nickel-plated brass

**HANSA FLEX**

## Właściwości

Temperatura robocza	Max. 150 °C
Ciśnienie	Max. 60 bar
Materiał	mosiądz niklowany



## Wskazówka

The dimensions of the standard screw fittings may change slightly during the life of the catalogue as a result of optimisation processes. Dalsze informacje na zapytanie.

## Opis

Suitable for air, water, oil, steam, etc.

## Dodatkowe informacje

Further types and dimensions on request.

## Artykuł

Oznaczenie	Gwint zewnętrzny	Gwint wewnętrzny	L1 (mm)	L2 (mm)	RK
K- 07 40 38 91	R 1/8	G 1/8	20,0	8,0	14 mm
K- 07 40 38 92	R 1/8	G 1/4	22,5	8,0	17 mm
K- 07 40 38 98	R 1/8	G 3/8	22,5	8,0	22 mm
K- 07 40 38 93	R 1/4	G 1/4	25,0	11,0	17 mm
K- 07 40 38 94	R 1/4	G 3/8	28,5	11,0	22 mm
K- 07 40 38 95	R 1/4	G 1/2	29,0	11,0	24 mm
K- 07 40 38 96	R 3/8	G 3/8	28,5	11,5	22 mm
K- 07 40 38 97	R 3/8	G 1/2	32,0	11,5	24 mm
K- 07 40 38 99	R 1/2	G 1/2	34,0	14,0	24 mm
K- 07 40 39 00	R 1/2	G 3/4	35,0	14,0	32 mm