

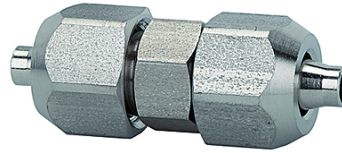
K-VERBINDER VA

Unions, stainless steel

HANSA FLEX

Właściwości

Zakres ciśnienia	Max. 25 bar
zalecane węże	PTFE hose
Zakres temperatury	-40 °C to +200 °C (depending on the hose quality and diameter)
Materiał	stal szlachetna 1.4404
uszczelka	Pure metal



Wskazówka

Dalsze informacje na zapytanie.

Opis

Supplied without seals. For use with corrosive media and at high temperatures. Screw fitting series made of stainless steel for all applications where compliance with strict tightness, pressure and temperature requirements is essential. The parts are manufactured without rubber seals, in other words they are ideal for very high temperatures or for use with corrosive liquids, e.g. in cases when FPM is no longer suitable.

Artykuł

Oznaczenie	dla węży	L1 (mm)	RK1 (mm)	RK2 (mm)
K- 07 40 30 23	6 mm / 4 mm	34,0	12	10
K- 07 40 30 24	8 mm / 6 mm	35,0	14	12
K- 07 40 30 22	10 mm / 8 mm	39,0	16	14